



LEAGUE OF WOMEN VOTERS - RoMaFH
ROSEVILLE, MAPLEWOOD, FALCON HEIGHTS

Also serving the communities of Little Canada and Lauderdale

VOTER

MAY 2007

www.romafh.org

In this issue...

- Page 1 **Rose Parade**
- Page 2 **Co-President's Letter**
Potluck Picnic
- Page 3 **April Meeting Follow-up**
- Page 4 **Summer Reading**
- Page 5 **Windows & Mirrors**
- Page 6 **Treasurer's Report**

Join the Parade!



2007 Rose Parade celebration is Monday, June 25!
Marching time is 6:15 p.m.

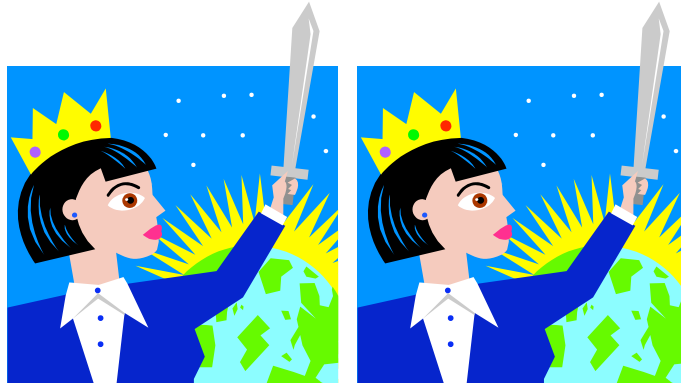
The "Chicken" is ready. 1200 American flags have been counted and are ready to distribute to the children along the route. We do need more marching Leaguers!

Please call 651-636-4766 (Shirley Bradway) to signup. Specific details for the parade will be mailed to you in late May. Bring your children, grandchildren, neighbors and friends to march with you and greet folks along the way.

The one mile parade will start at the Roseville Area High School (1261 County Rd. B-2), proceed to Lexington Avenue and go north to the Roseville Skating Center at 2661 Civic Center Drive.

Attire will be a white shirt and blue pants or skirt. Bring your League button; red sashes will be available at the parade site.

SAVE THE DATE! Tuesday eve, June 19th, 5:30 - 8 PM there will be a potluck picnic for RoMaFH members and some of the women who attended the LWVMN Dialogue Summit in April. It will be at Central Park, in the Founder's Shelter off Victoria. The reservation is made...we will have access to the kitchen and bathrooms, be close to play equipment, have good food and enjoy each other's company! Watch for more details later.



Co-Presidents' Letter

It has been a busy, exciting year for LWV-RoMaFH! We have had exciting programs that have been extremely well attended, covering an array of topics identified by our members. We continue to have one of the largest, most active leagues in the state. Thank you all for the many hours that you devote to making our league successful. A special congratulations to Florence Sprague who won the Gavel Club Award!

2006 was a big year for elections. Voter services committee led six candidate forum and our league worked with Roseville Rotary and other organizations to sponsor and staff Kids Vote 2006. Our league members are politically active in many ways so election time is always invigorating and exhausting! Thank you all for these efforts.

This year the Diversity Committee released it's new video about Voting Made Easy to much critical acclaim! We are very thankful for the work of this committee over the past two years in leading important discussions and providing lots of education.

Please put these dates on your calendars: June 25th—Rosefest Parade and June 27th Calendar planning meeting for the next fiscal year.

Teri Kysylszyn/Barb Yates

Co-presidents

2006-7 Board of Directors

Teri Kysylszyn
Barbara Yates
Co-Presidents

Andrea Brodtmann
Secretary

Florence Sprague
Treasurer

Ann Berry, Georgeann Hall, Diane Nystrom, Eileen Ulrich, Carole Erickson, Lorraine Fischer
CMAL Program Division

Ann Cleland
Public Relations

Angela Robinson
Action Chair

Dan Roe (Roseville)
Lorraine Fischer (Maplewood),
Barbara Lehn (Little Canada)
Jill Lund (623 School Board)
Observer Program

Andrea Brodtmann
Patricia DeFrancis
Sandi Lutz, Linda McLoon
Voter Service

Karen Schaffer
Gale Pederson
Membership

Georgiana Sobola
Units/ Admin. Asst

Laura French, Diane Nystrom
Newsletter

Joan Stark
Betty Harper
Finance Committee



Calendar of Events 2007

May 23	Board Meeting
June 25	Rosefest Parade
June 27	Board Calendar Planning Meeting

Summer Reading on Immigration

The Middle of Everywhere, by Mary Pipher, the author of Reviving Ophelia recounts her myriad experiences with refugees from a multitude of countries who land in Lincoln, Nebraska. Wonderful reading and very touching, but personal, not legalistic.

From Immigration Basics at the LWVUS website:
William Dudley, Ed. Illegal Immigration. Opposing Viewpoints Series. Greenhaven Press. 2002
Includes expert opinions in a pro/con format. Available new and used from amazon.com

Oscar Handlin. The Uprooted: The Epic Story of the Great Migrations That Made the American People. Little, Brown and Co. 1973 University of Pennsylvania Press. 2002.
As the title indicates, this book is about the history of immigration in this country. Both printings are available new and used from amazon.com.

Immigration and America's Future: A New Chapter. Report of the Independent Task Force on Immigration and America's Future. Spencer Abraham and Lee H. Hamilton, Co-Chairs. Migration Policy Institute. 2006
Just released on September 20, 2006, this publication may be ordered on the Migration Policy Institute at www.migrationpolicy.org for \$14.95. Includes policy recommendations. Because of its timeliness and its conciseness (93 pages of text), this may be the one book on immigration issues that you want.

Tamar Jacoby, Ed. Reinventing the Melting Pot: The New Immigrants and What it Means to be American. NY: Free Press. 2004
This is a compilation of writings from various authors, expressing a variety of opinions about immigration. Available new and used from amazon.com

Ann Chih Lin. Immigration CQs Vital Issues Series. CQ Press. 2002.
Even handed analysis of immigration, covering all sides of issue. Available new and used from amazon.com

Ruben Martinez. Crossing Over: A Mexican Family on the Migrant Trail.. (Henry Holt and Co.).



Windows and Mirrors for All

By Florence Sprague

A few of the many books on autism available:

[Send in the Idiots: Stories from the Other Side of Autism](#), by Kamran Nazeer

[Ten Things Every Child with Autism Wishes You Knew](#), by Ellen Notbohm

[Unstrange Minds: Remapping the World of Autism](#), by Roy Richard Grinker

[The Fabric of Autism, Weaving The Threads Into A Cogent Theory](#), by Judith Bluestone
[Emergence: Labeled Autistic](#), by Temple Grandin

[Developing Talents](#), by Temple Grandin and Kate Duffy, a career planning guide specifically for high-functioning adolescents and young adults on the autism spectrum, their families, teachers and counselors.

[Unwritten Rules of Social Relationships, Decoding Social Mysteries Through the Unique Perspectives of Autism](#), by Temple Grandin and Sean Barron

Out of the Mouths of Babes

One of the first times I remember encountering autism was in the early 1980s when the young child of a doctor on the television show “St. Elsewhere” was said to be autistic. This child was portrayed as unable to make emotional connections with his father (mother deceased, I think), did not talk or communicate as other children of his age and had violent emotional outbursts. It was portrayed as tragic and untreatable.

Today our understanding of autism has deepened, but it is still not well understood and it isolates many individuals and families. Autism is a complex set of neurological disorders, often referred to as autism spectrum disorders, or ASD. It includes a wide variety of types and degrees of expression from profoundly disabling to minimally disruptive of ordinary interaction. The various disorders all affect an individual’s ability to read the behavioral signals of others and interact as expected. Communication skills are impaired and there are often repetitive behaviors. Techniques for helping individuals with autism to learn to fit into ordinary workplaces and schools are being developed, but there is no “cure.” Individuals with ASD may be extremely intelligent, have a narrow band of skill, or be too bound in their own psyche for us to assess their intelligence by standard means. Some individuals with autism have learned to share the unique perspectives and insights that they feel their autism enables.

Diagnoses of autism are on the rise, though no one is certain why. One in 150 children is diagnosed with autism today, as families and schools know only too well. Recent research is looking into the role of genetic mutations in autism, not so much for heredity as for the role of serendipitous mutations and the interaction of multiple genes. Are these mutations caused by environmental factors or are they random? As with so much relating to autism, that is not yet known, and the research continues. Researchers are also investigating a posited role of vaccines, though no definitive link has been established.

It is not easy to be different. A fascinating fictional perspective on autism is found in [The Curious Incident of the Dog in the Nighttime](#), by Mark Haddon. I found this story highly engaging. As a parent I ached for the parents in the novel. Everything which I would have done instinctively as a parent would have been wrong for this boy. He displayed a strong internal consistency in his needs, but those needs would have conflicted with my way of doing things, my expectations, my sense of what was reasonable. This book made me stop and think about how set we are in our ways. How narrow is our view of what is acceptable or appropriate.

And isn’t that what diversity is all about? There is not just one way to do things, but too often we think there is. For all of us, doing things a different way can be uncomfortable, and when you do something the way most people do it, you never have to think about how to do things. What you do naturally is fine. Then you travel to a new place where things are done differently and Wham! You have to learn what to do all over again, or you meet someone who needs to have things done differently and you blame them for your discomfort. We are creatures of habit, but many different habits can all be functional in the right environment.

Things which most peoples’ brains allow them to pick up naturally,

2007 Finance Drive

LWVRoMaFH thanks the following League Members and Friends of the League for their generous contributions to the 2007 Finance Drive. To date, contributions total \$2,220. Contributions are dedicated to the *Citizens*

Education Fund (tax deductible) or for *General Operating Expenses* (not tax deductible).

Ahn, Betty
Berry, Ann
Blesener, Bill
Blomquist, Joyce
Bradway, Shirley
Brodtmann, Andrea
Browne, Nancy
Ciernia, Kathleen
Cleland, Ann
Community Resource Bank
Cushing, Carolyn
Davies, Wanda
DeBenedet, Jim
DeBenedet, Stephanie
Duddleston, Mary
Erickson, Carole
Ernst, Betty
Fischer, Lorraine
Franke, Polly
Froelich, Gloria
Greiling, Mindy
Hall, Georgeann
Harper, Elizabeth
Haugen, Ann
House, Janelle
Hoyt, Susan
Irsfeld, Nancy
Isaacs, Florence
Johnston, Julianne
Lutz, Sandra
Matts, Le Hutchins
Menanteau, Diana
O'Connor, Patricia
Palmer, Mary Ann
Pearson, Eleanor
Peterson, Donna

like when to smile, when to greet someone, is the other person happy or sad or angry today must be consciously and intentionally taught to and learned by many individuals with autism. Many do learn to interact fairly normally with guidance; others cannot. Sometimes they learn better with specific examples rather than general rules which may be difficult for them to apply.

Temple Grandin, a woman with autism who is well known for her pioneering work on reducing stress for animals at slaughterhouses, says that she thinks in beautiful, precise pictures, and loves that way of thinking. .

“Because I have autism, I live by concrete rules instead of abstract beliefs. And because I have autism, I think in pictures and sounds. I don't have the ability to process abstract thought the way that you do. Here's how my brain works: It's like the search engine Google for images. If you say the word "love" to me, I'll surf the Internet inside my brain. Then, a series of images pops into my head.”

Another woman with autism, Dawn Prince-Hughes has done innovative studies of gorillas, and felt that the connections she made with gorillas helped her to connect with people. Her memoir, *Songs of the Gorilla Nation, My Journey Through Autism* is an interesting review of her struggles to find her place in a world that too often was foreign to her.

The Public Radio listeners among you may be familiar with the current series of vignettes called “This I Believe.” Last fall a teen with Asperger’s Syndrome (at the high-functioning end of the autism spectrum) spoke about being teased and ostracized because he was different from the other children, in ways attributable to Asperger’s Syndrome. He spoke poignantly about everyone’s need to be accepted and closed with “Sometimes I wish I were like everyone else, but not really. Because I believe people should be respected for being different because we’re all different in our own ways. This I believe.” Out of the mouths of babes...

To learn more check out the books mentioned above or try these:

Read the entire “This I Believe” essay at <http://www.npr.org/templates/story/story.php?storyId=6254308>

Temple Grandin also wrote a “This I Believe” essay.

Find more general information and links to resources at <http://www.autismspeaks.org>

Read about the genetic research at the University of Michigan at <http://www.ns.umich.edu/htdocs/releases/story.php?id=3085> (Feb.

(Finance Drive, cont'd)

Recksiedler, Lila
Rempel, Leola
Roseville Properties
Scheurs, Lee
Signorelli, Norma
Simundson, Dan
Sobola, Georgiana
Spartz, Jane
Sprague, Florence
Stark, Joan
Stuthman, Judith
Vczarneck. Caroline
Warner, Cecilia

Treasurer's Report January 2007



Treasurer's Report

March 31, 2007

Previous Checking Balance, March 26, 2007	<u>\$1,711.65</u>
Income:	
Total Income:	<u>\$0.00</u>
Expenses:	
#4133 Ann Berry, Program and Board	\$16.91
#4134 Barb Lehn, bookmarks	\$21.00
Total Expenses:	<u>\$37.91</u>
Balance in Checking March 31, 2007	<u>\$1,673.74</u>

Fund Balances:

Checking	\$1,673.74
Savings	\$3,848.26
Education Fund	\$4,838.65

Members 92

This is the end of Fiscal Year 2006-2007

Treasurer's Report

April 24, 2007

Previous Checking Balance, March 31, 2007	<u>\$1,673.74</u>
Income:	
Finance Drive	\$50.00
Dues, 30 @ \$50, 3 @ \$75	\$1,725.00
Total Income:	<u>\$1,775.00</u>
Expenses:	
#4135 LWVUS, 4 th qtr. PMP	\$578.46
Total Expenses:	<u>\$578.46</u>
Balance in Checking, April 24, 2007	<u>\$2,870.28</u>

Fund Balances

Checking	\$2,870.28
Savings	\$3,848.26
Education Fund	\$4,998.65

Members 38 32 Individual, 3 households of 2

League of Women Voters of Roseville,
Maplewood and Falcon Heights
Diane Nystrom
VOTER Mailing Coordinator
996 Glen Paul Court
Shoreview, MN 55126

