



LEAGUE OF WOMEN VOTERS - RoMaFH
ROSEVILLE, MAPLEWOOD, FALCON HEIGHTS

Also serving the communities of Little Canada and Lauderdale

VOTER

March 2006

www.romafh.org

In this issue...

- Page 1 **March Units**
- Page 2 **Co-President's Letter**
- Page 3 **Calendar of Events; An Isolated Incident**
- Page 4 **Announcements**
- Page 5 **KidsVoting; Annual Meeting Reminder; Immigration Policy: Is There a Better Way?**
- Page 6 **Thanks to Members; Immigration in Minnesota: Three Perspectives**
- Page 7 **Treasurer's Report**
- Page 8 **Feb. Unit Reports; Proposed Budget**
- Page 9 **RoMaFH Book Sale**
- Page 10 **Thomas Mann to Speak at Convention**

March Unit Meetings

CODE ENFORCEMENT COMMITTEE

Rick Talbot, City of Roseville Code Enforcement Officer
Heather Worthington, City Administrator, Falcon Heights
Joel Hanson, City Administrator, Little Canada...

The Leagues of Women Voters RoMaFH and Little Canada will review city code ordinances that pertain to residential exterior building maintenance and property management.

Tuesday, March 21, 2006

Timber Lodge Steakhouse

5:30 pm Social Hour/7:00 pm Discussion

Call Mary Jo Rourke 651.483.1228 for reservations

Tuesday, March 22, 2006

Prince of Peace Lutheran Church

9:30 am Discussion

2005 – 2006 Board of Directors

Teri Kysylyczyn
Barbara Lehn
Co-Presidents

Andrea Brodtmann
Marilyn Ulrich
Secretary

Florence Sprague
Treasurer

Ann Berry, Georgeann Hall, Diane
Nystrom, Eileen Ulrich, Barbara
Yates, Merrie Zakaras, Beverly
Price, Lorraine Fischer CMAL
Program Division

Robert Waterman
Public Relations

Angela Robinson
Action Chair

Karen Hanson (Roseville)
Lorraine Fischer (Maplewood),
Barbara Lehn (Little Canada)
Jill Lund (623 School Board)
Observer Program

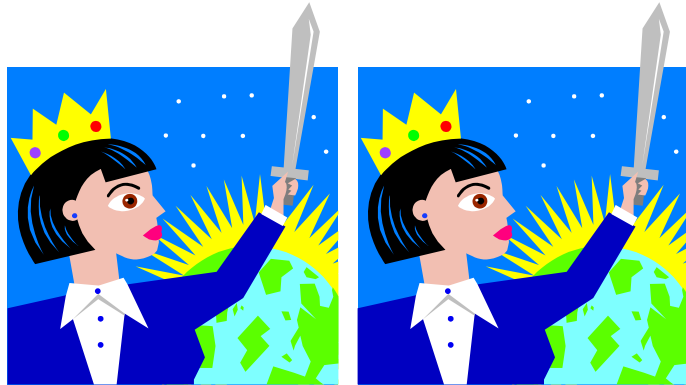
Andrea Brodtmann
Patricia DeFrancis
Sandi Lutz, Linda McLoon
Voter Service

Ann Berry
Carole Erickson
Membership

Georgiana Sobola
Units/ Admin. Asst

Laura French, Tammy Pust
Diane Nystrom
Newsletter

Vicky Lorenz
Joan Stark
Finance Committee

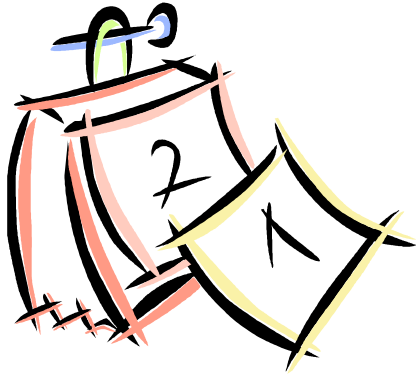


Co-Presidents' Letter

The Code Enforcement Committee has been meeting once a month since September. The members of the committee, Georgeann Hall; Nancy Irsfeld; Norma Signorelli; Barbara Lehn; Carole Erickson; Ann Berry (recently joined); Carolyn Cushing; and Dan Roe (recently joined), have been working hard to assess various issues related to code enforcement in the communities RoMaFH serves.

For our Unit Meetings next week our speakers will talk about how property maintenance and other property-related codes are enforced in their cities. The Roseville City Council recently adopted the International Property Maintenance Code “(IPMC)”. The document is 32 pages and was amended at the time of adoption. The Code Enforcement Committee has many concerns about the ordinance, including the following:

- Should there be more than one complaint before a property is subject to the ordinance?
- How does the IPMC affect property that is for sale?
- Will the city be hiring more code enforcement personnel?
- Will the cities create a new homeowner’s packet, and if so will the packet include the International Property Maintenance Code?
- How is overcrowding defined in the IPMC?
- Who is the Codes Coordinator?
- What steps will be taken to prevent residents from being charged with a misdemeanor related to properties?
- Will tax resources be used to enforce the IPMC? Will violators have to reimburse the city for taxes spent?
- What does the paragraph in the current *City News* mean when it notes that when doing remodeling, lumber and construction materials cannot be stored outside the



Calendar of Events 2005-2006

- Mar. 18 CMAL Quarterly Meeting
- Mar. 21 Evening Unit Meeting
- Mar. 22 Daytime Unit Meeting
- Mar. 29 Board Meeting/Voter deadline
- Apr. 18 Evening Unit Meeting
- Apr. 19 Daytime Unit Meeting
- Apr. 26 Board Meeting/ Voter Deadline
- Apr. 30 RoMaFH Booksale
- May 9 Annual Meeting
- May 16 Evening Unit Meeting
- May 17 Daytime Unit Meeting
- May 24 Joint Board Meeting
- June 9-13 LWVUS Convention in Minneapolis
- June 26 Rosefest
- June 28 Board Calendar Planning Meeting

- residence?
- Does accumulation of stagnant water mean a “puddle” (302.2)?
- Are weeds included in the definition of all grasses?
- The expression “in good repair” is used many times. What does that expression mean? (302.7)
- If my neighbor paints a sunset on their garage door can I get my neighbor to remove it as “any marking, carving or graffiti”? (302.9)

These, and other interesting questions, will be addressed by the speakers at our Unit meetings next week. Join us for a discussion of whether this ordinance, or the ordinances of other cities, strike the correct balance between the community’s desire for well-kept properties and the citizen’s expectations of privacy in and control of their own property.

Windows and Mirrors for All By Florence Sprague

An Isolated Opportunity

One thing leads to another. I heard an intriguing story, I tracked down the book behind it (Gee, that’s old I was told. Copyright 1985? Hmmph.) and now I’m trying to find the time to read it, and even though I am just getting past the history and genetics to the opportunity sections of which I first heard, I want to share this story with you. It offers much to ponder.

Due to geographic isolation, a genetic anomaly led to there being a substantial “deaf and dumb” [in the parlance of the time] population on the island of Martha’s Vineyard for several centuries. At times it reached close to 10% and the trait recurred for generations. Though the genetic trait is now lost into a wider gene pool, the research of Dr. Nora Groce and others comparing the overall life success of this isolated non-hearing population to that of non-hearing population on the mainland is intriguing. On Martha’s Vineyard, hearing and non-hearing populations showed essentially comparable levels of educational attainment, diversity of job, rates of marriage and procreation and other markers of “normal” life. On the mainland, the non-hearing had statistics substantially lower than the hearing on all measures. Why was this? It was not expected when on the mainland there were special schools for the deaf, but not on the island. The key was that on the island, the presence of non-hearing individuals in so many families in such small communities led to the development



Announcements

- 🔊 The next meeting of the LWV RoMaFH Diversity and Outreach Committee is on Thursday March 16 at 6:30 p.m. at Marilyn Ulrich's home. We will preview a couple of videos which we are considering using at small voter education/registration events in the fall. See your directory for Marilyn's address or call Florence Sprague at 651/779-0349.
- 🔊 Bob Waterman was the first RoMaFH member to pay his dues for next year! Thanks, Bob.
- 🔊 Can We Count on MN's Voting System? A Forum on the State of Elections in MN. 3/18 – 10:00 – noon. Register at 9:30 am. First Universalist Church, 3400 Dupont S., Mpls. Panel: Sec. of State Mary Kiffmeyer; Rep. Bill Hilty (8A); Alyssa Macy, Ctr. for Civic Participation; David Cobb, former presidential candidate, Green Party; Matthea Little Smith, NAACP.

and virtually universal use of a specialized sign language. Everyone could use it, and in the days before telephones, may have even found it useful for visual communication across distance. Since everyone knew the sign language, it was not seen as a special accommodation, it was just part of the culture of the community. Individuals were more likely to be known for their skills, as fishermen, farmers, or bakers, than by their disability.

Dr. Groce points out that in this situation, the deaf people had a disability, but not a handicap. To one who often struggles with the ever changing landscape of language in the field of diversity, this is a crucial distinction, but one which may be situation dependent. They had a disability in that there was an ability, hearing, which they did not have, but it was not a handicap, because they were included in all aspects of the community life on an equal basis and functioned independently.

A web search on Dr. Groce led me to a fairly recent BBC radio conversation in which she participated. The deaf participants noted that they often felt that their lack of hearing was less of a problem than the attitudes of other people. The mother of one hard of hearing child was frustrated by the attitude of people who felt that her child's hearing aids were something to hide and be ashamed of rather than a wonderful tool for a wonderful child. They all perceived the discomfort of others. Deafness can be an invisible disability. It is also one with which different individuals may have different opportunities for coping. If these speakers felt that others saw hearing aids as something to hide, how must someone with an obvious physical difference be being made to feel?

My son attends college in Rochester, New York. He has noticed that the fast food restaurants adjacent to the nearby Rochester School for the Deaf (birth to age 21) provide special machines to facilitate ordering by non-hearing customers. This is a simple accommodation which must be economically beneficial to those businesses. How many other things could be easily done to allow more people to be known for their abilities rather than their disabilities?

The book is *Everyone Here Spoke Sign Language* by Nora Groce, Ph.D. and is available in the St. Paul library (and I now own a copy). The discussion can be found at <http://www.bbc.co.uk/radio4/factual/scripts/differentworld5.pdf>.



The RoMaFH League will be a sponsor of the KidsVoting program in the upcoming election season. KidsVoting is a curriculum-based program proven to increase voter participation by teaching children about the election process, allowing them to vote at special KidsVoting booths at the polls, and encouraging them to get their parents to the polls so the entire family can participate in the process. Stay tuned for volunteer opportunities this fall.



May 9, 2006 -- Save This Date!

for the 53rd RoMaFH Annual Meeting
at Falcon Heights City Hall

Social hour 5:30 pm, Dinner 6:00 pm

Hope to see all of you there!!!

Immigration Policy: Is There Another Way?

A Forum on
Immigration, Policy and Community
March 14, 2006

7:00 to 9:00 p.m.
Central Presbyterian Church
500 Cedar Street
St. Paul, MN 55101

Speakers:

St. Paul Mayor Chris Coleman
Mexican Consul Nathan Wolf
John Keller, Immigration Law Center
Mariano Espinoza or Quito Ziegler, Minnesota Immigrant
Freedom Network
Ahamadou Alassani, FIRE Board Director

Organized by Central Presbyterian Church and
Foundation for Immigrant Resources and Education (FIRE)

Agenda: each speaker to discuss his or her viewpoints for 10-15 minutes in the first hour. The second hour will be devoted to audience questions and comments.



Thanks for your generous response to the fund drive. As of the last board meeting, we had received \$1400. It's not too late to give - donations are welcome through the Annual Meeting!

Thanks also to LWV volunteers who attended the Feb. 4 National Girls and Women's Sports event. Members encouraged girls to vote, handed out copies of *The Voter*, and added 5 names to our list of potential members!

It Wasn't Broke... They "Fixed" It...

In the February issue of *The Voter*, we told you about the new rules for registering voters at new citizenship ceremonies. At the February 15th ceremony, the League was only allowed to distribute voter registration cards from the aisles after the ceremony concluded and to register voters at a table outside the hall when the new citizens were departing.

The results were predictably "disheartening," according to



RoMaFH League Members Responding Generously to the 2006 Finance Drive

Contributions to the tax deductible *Education Fund* are earmarked for candidate forums, voter registration, and diversity outreach programs to the local community. Non-deductible funds are utilized for *General Operating Expenses*. Your participation in this drive is important and it is appreciated. For additional information please contact Vicky Lorenz (651/490-1608) or Joan Stark (651/484-4966).



IMMIGRANTS IN MINNESOTA: THREE PERSPECTIVES

DAVID GAITHER, Chief of Staff to Gov. Pawlenty

BISHOP PETER ROGNESS, St. Paul Synod, ELCA

KAREN ELLINGSON, Immigration Attorney

March 18, 2006

Martin Luther King Center, 270 N. Kent Street, St. Paul
9:30 - 10:00 coffee/registration; 10:00 - 11:30 Program and Q/A

Judy Stuthman, who leads the League's efforts at the citizenship ceremonies. There was a drop from 820 registrations in November to 140 in February.

No changes will be made before the next ceremony, scheduled for March 22, but the INS director had promised that process would be evaluated to determine whether it adversely affects the numbers of citizens who register. Clearly, it did. Stay tuned!

Meanwhile, if you want to volunteer for the March ceremony (to be held at 11 a.m. and 2 p.m. in downtown St Paul, approximately 250 participants each), contact Judy Stuthman at 651 644 8588 jastuthman@aol.com.



Treasurer's Report for February 2006

How many undocumented immigrants are there in Minnesota -- 85,000? One-third that number? What do they cost the state in terms of support services? What do they contribute to the overall good? Do "sanctuary laws" contribute to public safety or should cities be stripped of the right to implement these laws? These are examples of some of the questions swirling around the issue of immigrants in Minnesota.

Immigration itself is a hot topic these days. In December, the United States House of Representatives passed a border-enforcement bill sponsored by Rep. Sensenbrenner (R. Wi). It has been described by some as "punitive." In the Senate, the McCain-Kennedy bill calls for comprehensive immigration reform. It has the support of the U. S. Catholic bishops.

Here at home, Gov. Tim Pawlenty has spoken out on the topic of illegal immigrants in Minnesota and will introduce legislation on the topic. Opinions about the seriousness of this problem in Minnesota vary and facts are hard to come by, but a few aspects of this topic will be addressed on March 18th by our knowledgeable and concerned panel of speakers. It is an opportunity for citizens to increase the depth of their understanding of a topic sure to be in the limelight this legislative session.

February 22, 2006

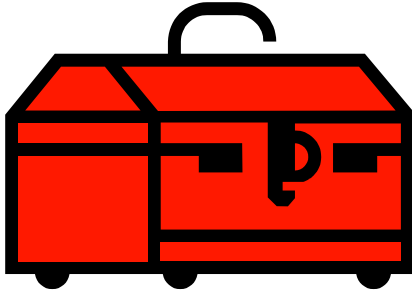
Previous Checking Balance, January 23, 2006 \$1,823.34

Income:

Dues, 1@ \$40, 1@ \$50	\$90.00
In kind:	
Ann Berry, membership	\$6.38
Vicky Lorenz finance postage	\$77.27
Finance Drive	\$595.00
Total Income:	<u>\$768.65</u>

Expenses:

#4055 Ann Berry, postage/mail directories	\$23.06
#4056 LWVMN thank you cards/finance	\$39.00
In kind, as above	\$83.65
#4057 John Kysylyczyn, prep/print directory	\$50.00
#4058 Void	
#4059 Diane Nystrom, Voter printing and postage	\$97.46
Total Expenses:	<u>\$293.17</u>



Balance on February 22, 2005	<u>\$2,298.82</u>
Fund Balances:	
Checking	\$2,298.82
Savings	\$3,814.86
Education Fund	\$3,141.12

Paid Members: 92 3 families of 2, 85 individual, 1 student

February Unit Meetings: League Discusses “The New Minnesotans”

More than 35 League members attended the Unit meetings in February for “A Discussion about Immigrants and Refugees, Economics and Education.” Joan Regal, a RoMaFH member, facilitated the meeting. Joan was part of the committee that produced “The New Minnesotans” Toolkit in April 2004. She showed an edited version of the 2004 video produced from “The New Minnesotans” town hall forum, which featured the views of new immigrants from a range of cultures.

A key takeaway from the video is that many recent immigrants had rich educational background and professional credentials in their home countries, which are not recognized here. As a result, Minnesota is deprived of the immigrants’ talents, and the immigrants are

Proposed Budget 2006-2007

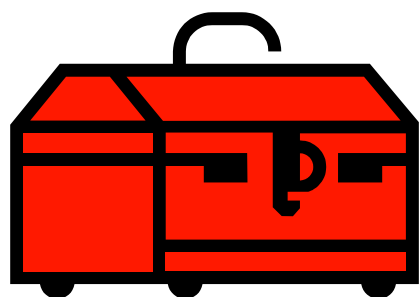
INCOME	
Dues	\$4,500.00
Contributions (unrestricted)	\$1,200.00
Annual Meeting	\$1,000.00
Miscellaneous	\$100.00
Booksale	\$800.00
Transfer from Savings	\$1,445.00
Reimbursements from Education Fund	
In Kind	
Total Income	\$9,045.00
EXPENSES	
Program Division	
Program	\$90.00
CMAL Meeting	\$40.00
Community Relations Division	
Public Relations/Advertising	\$25.00
Publication Purchases	\$70.00
Finance Committee	\$250.00
Voter Service/Citizen Info	\$25.00
Action/Coalition	\$10.00
Organization Division	
VOTER printing	\$300.00
VOTER mailing	\$300.00
Membership	\$175.00
Unit Meetings	\$20.00
Annual Meeting (food/booklet)	
Catering	\$900.00
Publishing/Printing/Miscellaneous	\$150.00
Membership Directory	\$50.00
Board Expenses	
President/Vice President	\$50.00
Secretary	\$100.00

unable to contribute as much as they would like to the economy and resources of Minnesota.

During the discussion, League members reflected on their own background. Members who are proud of their Bohemian, Swiss, Scandinavian, and British ancestry championed the right of new immigrants to add their own heritage to our state's increasingly diverse mix.

Members also discussed the need to make League more reflective of "the new Minnesota," recruiting a more diverse membership. Possibilities for outreach were noted, and more ideas are welcome.

"The New Minnesotans Toolkit," including the video and discussion questions, is available for loan through the RoMaFH League. Members are encouraged to use it at meetings throughout the community.



Board Expense	\$50.00
Facility Honorarium	\$75.00
Delegate, Travel, Affiliation	
Delegates/convention/Workshop	\$2,000.00
Miscellaneous	
Recognitions and Remembrances	\$150.00
Other Club Dues (Gavel Club)	\$15.00
Booksale expenses	\$100.00
Other	\$100.00
Website	\$150.00
In Kind	
To be Reimbursed from Education Fund	
Per Member Payment	
PMP National (\$??/member)	\$2,000.00
PMP State (\$18/member)	\$1,700.00
CMAL Dues (Approximately \$1/member)	\$95.00
Total Expenses	\$9,045.00



**THE W 😊 NDERFUL R 😊 MAFH B 😊 😊 K SALE IS
C 😊 MING!!!**

Sunday April 30th from 7:00 am to 1:30 pm

We need your books, and we need your help. Please call Marty Everest (651-646-8026) or Joan Stark(651-488-4966) and let them know which of the following assistance you will be happy to provide.

☺ Before 4/28 - Bring yours, your neighbor's, your friend's or your relative's books, magazines, CDs, DVDs, videos, cassettes, games and puzzles to Georgiana's house at 1961 Hamline Ave North as donations for the sale.

☺ Friday, 4/28 between 1:00 and 5:00 - Bring any portable bookcases to the Fairview Community Center.



Thomas Mann Will Be Opening Plenary Session Speaker: Don't Be Late!

Thomas E. Mann of the Brookings Institution will speak at the opening plenary session of the LWV Convention – *promptly at 1 p.m. on Saturday, June 10th.* He will be addressing “American Democracy in a Partisan Era.” Dr. Mann is a leader on campaign finance, lobby and redistricting reforms.

☺ Friday, 4/28 between 1:00 and 5:00 - Help transport donations from Georgiana’s home to the Fairview Community Center.

☺ Saturday, 4/29 between 8:00 am and 2:00 pm – Set up tables and bookcases and arrange books on the shelves.

☺ Sunday, 4/30 between 7:00 am and 2:00 pm - Sell books! Afterwards, pack up what we don't sell and help return them to Georgiana's house.

Many hands make light work. Please find some time to help, and call Marty or Joan to let them know when to expect your smiling face!

League of Women Voters of Roseville,
Maplewood and Falcon Heights
Diane Nystrom
VOTER Mailing Coordinator
996 Glen Paul Court
Shoreview, MN 55126