



LEAGUE OF WOMEN VOTERS - RoMaFH
ROSEVILLE, MAPLEWOOD, FALCON HEIGHTS
Also serving the communities of Little Canada and Lauderdale

January 2006

www.romafh.org

In this issue...

- Page 1 **January Lively Issues Unit Meetings**
- Page 2 **Co-President's Letter/Baby K!**
- Page 3 **Calendar of Events Make RoMaFH a New Year's Resolution!**
- Page 4 **Travel to a Kinder Place**
- Page 5 **Announcements/ Mayor Gehrz Wins State Award**
- Page 6 **Members Who Are Not Feeling Their Best/Diversity Forum Draws a Crowd**
- Page 7 **Our Efforts DO Pay Off!/Local Code Study/Holiday Party**
- Page 8 **Power of 3 Campaign MLK Jr. Day**
- Page 9-11 **CMAL Meeting/ Lively Issues Program Planning Guide**
- Page 11 **Treasurer's Report**
- Page 12 **Waterman Greetings**

January Unit Meetings

LIVELY ISSUES!

This year's Lively Issues meeting will focus on identifying community issues of interest to our members, as well as reviewing our current positions. In the past, we have focused primarily on issues that we want LWV-RoMaFH to take a position on resulting from the traditional study process. That will still be an important outcome of our meeting, but we also want to test out other ways of educating our members and addressing community needs. We also want to provide an opportunity for members to suggest topics without fear of being assigned to the study team!

Please review the Planning Form in this month's VOTER and think about what local issues concern you and how you would like to learn more about them. What issues will be important to our vision for the future? What role can/should we play in providing leadership on important issues in our communities?

Put on your thinking caps and head out to the Lively Issues meetings in January. Good fun, good discussions and good-natured disagreements will be encouraged!

Tuesday, January 17, 2006

Timber Lodge Steakhouse

5:30 pm Social Hour/7:00 pm Discussion

Call Ann Berry 651.484.4502 for reservations

Wednesday, January 18, 2006

Prince of Peace Lutheran Church

9:30 am Discussion

*Promoting political
responsibility through informed
and active participation of
citizens in government.*

2005 – 2006 Board of Directors

Teri Kysylyczyn
Barbara Lehn
Co-Presidents

Andrea Brodtmann
Marilyn Ulrich
Secretary

Florence Sprague
Treasurer

Ann Berry, Georgeann Hall, Diane
Nystrom, Eileen Ulrich, Barbara
Yates, Merrie Zakaras, Beverly
Price, Lorraine Fischer CMAL
Program Division

Robert Waterman
Public Relations

Angela Robinson
Action Chair

Karen Hanson (Roseville)
Lorraine Fischer (Maplewood),
Barbara Lehn (Little Canada)
Jill Lund (623 School Board)
Observer Program

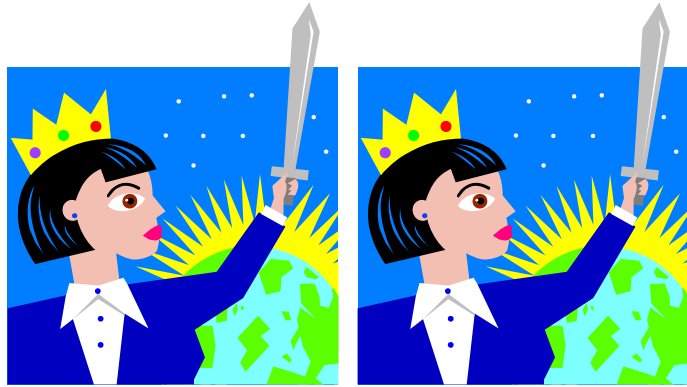
Andrea Brodtmann
Patricia DeFrancis
Sandi Lutz, Linda McLoon
Voter Service

Ann Berry
Carole Erickson
Membership

Georgiana Sobola
Units/ Admin. Asst

Laura French, Tammy Pust
Diane Nystrom
Newsletter

Vicky Lorenz
Joan Stark
Finance Committee



January Co-Presidents' Letter

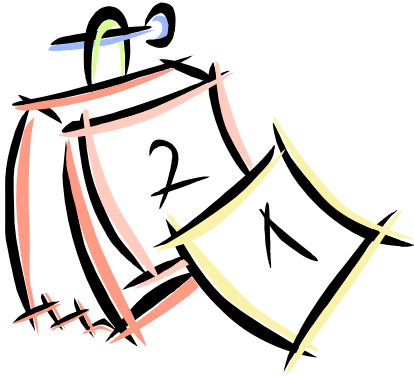
This month, our Co-Presidents have been very busy with family matters and so have not produced a letter for us. However, Co-President Terri Kysylyczyn has produced a bouncing baby boy!



**Meet Michael Andrew Kysylyczyn
and his Big Sister Sara!**

Born November 18, 2005
7 pounds 9 oz.
21 inches long

Everyone is happy and healthy!



Calendar of Events 2005-2006

- Jan. 17 Evening Unit Meeting/
Lively Issues
- Jan. 18 Daytime Unit Meeting/
Lively Issues
- Jan. 21 CMAL Quarterly
Meeting
- Jan. 25 Board Meeting/Voter
deadline
- Feb. 21 Unit Meeting
- Feb. 22 Unit Meeting/
Board Meeting/Voter
deadline
- Mar. 18 CMAL Quarterly
Meeting
- Mar. 21 Evening Unit Meeting
- Mar. 22 Daytime Unit Meeting
- Mar. 29 Board Meeting/Voter
deadline
- Apr. 18 Evening Unit Meeting
- Apr. 19 Daytime Unit Meeting
- Apr. 23 Book Sale (tentative)
- Apr. 26 Board Meeting/ Voter
deadline
- May ? Annual Meeting
- May 16 Evening Unit Meeting

Make RoMaFH a New Year's Resolution!

Maybe you've already made your New Year's Resolutions—maybe you've already broken a few. But it's not too late to add one more item to your list: Be more active in your support of RoMaFH this year.

What's that you say? You can't possibly add one more thing to your already heaping plate of activities and responsibilities? You've already promised to floss regularly, lose 30 lbs., and join a book club!

Okay, how about just bumping your League activity up a notch or two? Here are some easy ways to get more involved:

- Come to Unit meetings. We have some fascinating topics coming up this year!
- Volunteer. The book sale this spring and the National Convention this summer are just a couple of possibilities.
- Recruit new members. This one is easy to fit into your existing schedule. Just remember to ask friends and acquaintances if they're members of League, and if they'd like to know more about the work we do.
- Take action. The League's Action Alerts keep members up to date on events, legislation, and other items of interest. If you aren't on the Action Alert e-mail list, send your name and e-mail address to Angela Robinson: arobinson@itcmed.com If you are on the list, follow through by taking action: Contact your legislators, read up on the issues, forward information to others.

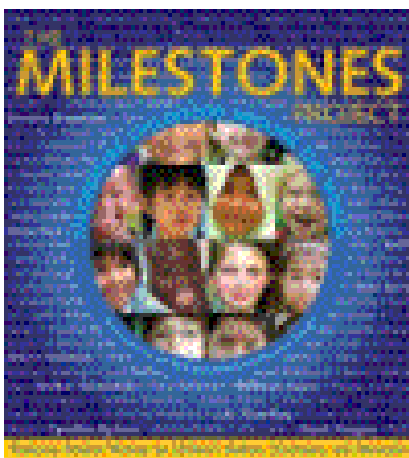
Those are just a few ideas. Start small if you need to. Build your "League muscle" one action at a time. By the end of the year, we'll be a stronger chapter, thanks to your efforts!



Windows and Mirrors for All By Florence Sprague

Travel to a Kinder Place

May 17 Daytime Unit Meeting
May 24 Joint Board Meeting
June 9-13 LWVUS Convention
in Minneapolis
June 26 Rosefest
June 28 Board Calendar
Planning Meeting



I don't usually think of an airport as a place for public education or enlightenment, but that was what I found on a walk through the Denver airport last spring. Strolling down the long corridor connecting concourses between flights I was charmed by pictures of young children experiencing "firsts": the first day of school, a first pair of glasses, a first piece of candy, a first trip to the dentist. The children shared with unsuspecting, and perhaps jaded, travelers their excitement, anticipation, trepidation, and pleasure in events we have all experienced. These children were of all races and many nationalities, yet it took no explanation to see how much they had in common.

These wonderful photos were part of the Milestones Project. The box for brochures about the project was empty, so I turned to the Internet, at <http://www.milestonesproject.com>, to learn more about the Milestones Project. The Milestones Project describes itself as "A photographic tribute to our shared humanity." Its mission is to "empower individuals, parents, and families to take actions in their own lives to reduce intolerance, promote nonviolence, and have a lasting impact upon the larger world." Founders Dr. Richard Steckel and Michele Steckel acknowledge that "photographs alone cannot heal the world's divisions. Healing requires action." In addition to public displays of "firsts" photographs in places like airports they have compiled a book and written a pledge. The book pairs some of their wonderful photos with memoirs from well-known children's book authors and illustrators and activists and writings by children themselves. The pledge reminds us of all of the damage that can be done by words, and how thoughtful use of words can help us to live more considerately.

The Milestones pledge:

"I pledge to notice the ways people are like me before I notice how they are different;

I pledge to say only kind things to others and to stop myself before I say mean things;

I pledge to use respectful words to work out my problems with other people;

I pledge to encourage my friends to do these things, too,
Because...

I know that if everyone does these four things we will put an end to intolerance and hatred all over the world."



Announcements

📣 **South Tonka League Open Meeting: Transit Plans for the SW Suburban Communities – Are we on Track?!** Jan. 12, 2006 from 7:00-9:15 pm, Shorewood City Hall, 5755 Country Club Road, Shorewood, MN. Call Sue Dodson (952.474.3851) for more info.

📣 **LWVMpls 2006 calendars are still available for purchase.** Contact Carol Green at 612.333.6319 (between 10:00 and 2:00) or email vote@lwvmpls.org.

📣 **2006 Convention – Program Planning materials are available online at www.lwv.org.** The deadline for making program suggestions is March 1, 2006.

📣 **Openness in Government: Looking for the Sunshine** – The deadline for this new LWVEF project was 11/30/05. Any League still interested in hosting an event on this topic should contact Danielle Duffy at ddfuffy@lwv.org.

The pledge is followed by signature lines for parents and children. It is a lesson of tolerance suitable for all. I guess travel can still be a mind broadening experience.

I wish you a peaceful new year.



Mayor Susan Gehrz Wins State Award

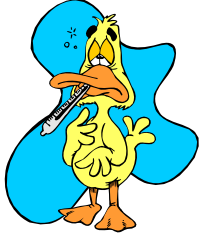
Falcon Heights Mayor [and RoMaFH LWV member] Sue Gehrz was awarded the League of Minnesota Cities highest honor for an elected official, the CC Ludwig award, on December 2, 2005 during the annual statewide conference held in Rochester. Recipients are chosen for their vision, statesmanship, and unwavering commitment to the public good.

Gehrz was credited for being active in emergency response through the CERTs (Community Emergency Response Team), guiding land use and redevelopment of the corner of Snelling and Larpenteur, and striving to get Falcon Heights residents involved in the work of the community. Beyond the borders of Falcon Heights, Gehrz has helped lead the way toward consolidated dispatch in Ramsey County, and served on the 800 megahertz policy committee. She has also served as officer and president of the Minnesota Mayor's Association, and as chair of the Improving Community Life Committee for the League of Minnesota Cities.

Congratulations to Falcon Heights Mayor Susan Gehrz! "To have received this esteemed award is truly an honor. As an elected official for Falcon Heights over the past 15 years, I have had the privilege of working with many great people from whom I learned so much. Having our hard work validated through this professional recognition makes it all worthwhile," said Gehrz.

The City Council and staff nominated Gehrz for the award in early October, and kept the announcement a secret until the night of December 2nd. Gehrz has served as Mayor since 1996, and has been on the City Council since 1990.

[reprinted from the City of Falcon Heights website.]



Members Who Are Not Feeling Their Best

Lila Recksiedler

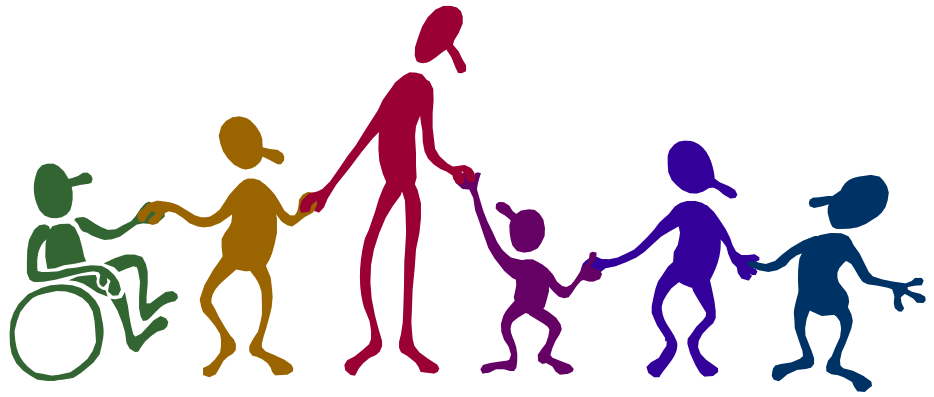
3104 N. Victoria
Roseville, MN 55113-1936
651/484-7782

Michael Garelick

[Laura French's partner]
2720 Oxford St N
Roseville, MN 55113-2010
(651) 229-0961

In this column, we are hoping to note the contact information for RoMaFH League members and their family members who are recovering from injury or illness and would likely appreciate a note or a quick phone call. Please contact either Tammy Pust (651/484-2573) or Laura French (651/229-0961) with any names you'd like included in this column in the future.

Thanks.



Diversity Forum Draws a Crowd

More than 40 people braved cold weather on November 16 to attend the RoMaFH panel discussion and forum, "Diversity's Hidden Issues: Challenges in K-12 Education."

Presenters included Johanna Eager, Coordinator of the Office of Equity and Integration for the Roseville Area Schools; Scott Allen, principal of Little Canada Elementary School; Tametha Grosland, Integration Equity Coach for the North St. Paul-Maplewood-Oakdale School District; and Julie S. Anderson, parent of a child who receives special education services.

Organizer Florence Sprague said that this was RoMaFH's second diversity forum. Last year's program was "quite general," Sprague said, so the topic of education was chosen as the focus of this year's program.

Attendees said they were impressed by the forum's wide definition of diversity—not only ethnic diversity, but also economic and disability issues. "We want to raise awareness and get people thinking differently," Sprague said.

For Sprague, a memorable point in the presentation was made by Julie Anderson, daughter of RoMaFH member Judy Stuthman. "Julie said she wants her daughter to be seen as an individual, not as a representative of a group," Sprague recalled. "I think that's what we all want—to be measured on our own merits."

Our Efforts DO Pay Off!

Do you ever wonder whether your actions make a difference? Sometimes change happens slowly, and activists tend to move on to other activities by the time their hard work pays off.

So let's take time to celebrate the success of Roseville's recycling program, which grew out of a League position on waste reduction. During the late 1980s, RoMaFH members including Leona Stempel worked to turn the policy statement into a working program.

By 2004, Roseville residents were recycling more than 2,900 tons of paper, bottles and cans. In 2005, the program was expected to set a record for material collected and people participating, according to the Roseville Review. Roseville Recycling coordinator Tim Pratt told the Roseville Review, "It starts with dedicated people who know how important recycling is for our environment and our economy."

Thank you, League members, for your dedication to the recycling effort and so many other important issues!



Local Program: Code Study

The code study was begun in response to complaints from citizens about enforcement procedures of Roseville ordinances. The RoMaFH committee's initial study found no obvious areas for action, as the difficulties appeared to be personnel-related rather than ordinance-driven. The city initiated some changes and began a review process, up-dating and reorganizing all city ordinances.

The committee has now reviewed material collected earlier, held interviews with city staff and the mayor, looked at the report by the Roseville HRA (Housing and Redevelopment Authority) and read copies of the proposed International Property Maintenance Code --to be adopted with a licensing ordinance for rental housing. The committee is gathering information from our other cities as well.

A future meeting will share information and present pros and cons for discussion. The committee is also considering publishing an informational brochure as a guide for citizens.



The RoMaFH December 7, 2005 Holiday Party was a huge success. Twenty-eight of our members (and 2 young "guests") joined together for a wonderful meal at Axels and a celebration of another year of League work completed. Thanks to all for your generous contributions to our selected charities.

The Minnesota Women's Building, built in 1884 on Rice Street in St. Paul, has had a colorful past. First a shop that sold tin products, it was also used as a mortuary, a furniture store, revivalist church and, finally, a pornography shop.

By the 1980s, the building had been condemned and abandoned. Noting its great location near the Capitol, which made their lobbying efforts easier, the League of Women Voters Minnesota, the Women's Consortium and Chrysalis worked together to establish it as the Minnesota Women's Building, the first of its kind in the country. The three women's groups raised \$650,000 to purchase and renovate the building and have made their homes there for decades doing the work necessary to help the lives of women and their families in Minnesota.

Now 17 years later, the Building shines anew following a much-needed second renovation. Go check it out! It's beautiful.

The LWV and Minnesota Women's Consortium's fundraising campaign is still accepting donations to cover the renovation costs. Checks can be sent to: POWER of 3 Campaign, 550 Rice St., St. Paul, MN 55103.

January 16th!

The Reverend Doctor Martin Luther King, Jr. Day

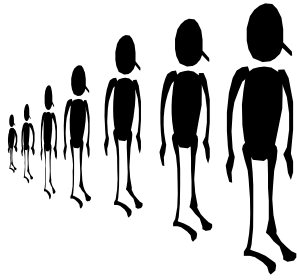
January 16 is the Dr. Martin Luther King, Jr. Holiday. Each year this day is marked in the Twin Cities by a major breakfast at the Minneapolis Convention Center honoring this great man and his legacy. In St. Paul there are other activities in which you and I could participate. There are community breakfasts at three places of worship, from 7:00 to 9:30 a.m. Breakfast is free (reservations are required) and will include a broadcast of the speaker from the convention center. Visit www.spacc.org, or call the St. Paul Area Council of Churches for more information. The breakfast is followed by a rally at St. Paul's Central High School from 9:30 – 10:30 a.m. connecting to a march from Central High to Concordia College and culminating in the Main Event at Concordia's Gangelhoff Center from about 11:00 to 1:00 p.m. Or join the many people who see this day not only as a time for remembrance, but a time for service. For volunteer ideas visit <http://www.volunteertwincities.org/volunteer/MLKDay2006.php>; for inspiration before volunteering attend a service at the Basilica of St. Mary in Minneapolis at 7:00 p.m. on the evening of the 15th. We should all use this day to spur ourselves to reach out and to open up.



"I have a dream..."

I have a dream that one day little black boys and black girls will be able to join hands with little white boys and white girls as sisters and brothers

I have a dream today."



**ONE MILLION
MORE: ARE WE
READY?**

Quarterly meeting of the
Council of Metropolitan Area
Leagues of Women Voters
(CMAL)

**Ann Beckman,
Metropolitan Council
Regional Growth Strategy
Manager**

January 21, 2006
Richfield City Hall,
Richfield, MN
9:30 a.m. coffee
10:00-11:30 a.m. program &
Q/A

According to Peter Bell,
Chair, Metropolitan Council,
“By the year 2030, our region
is expected to grow to 3.6
million people, an increase of
nearly 1 million from our
2000 population. It is
essential that we make the
most effective use of our
enormously expensive
highways, transit system,
sewers, parks and other
public investments.”

**LWV-RoMaFH Program Planning Form
Please fill out and bring to the Lively Issues Meeting on
January 17 or 18, 2006**

If you can't attend, please send the completed form, prior to 1/17:
Barb Yates, 3057 Wheeler St. N., Roseville, MN 55113

New Issues:

At this year's Lively Issues meeting, we would like to challenge you to identify new community issues that you would like to see LWV-RoMaFH grapple with over the next year(s). We would also like to explore a variety of ways that LWV-RoMaFH might explore or respond to a new issue. For example, in the past we have conducted study groups to help formulate a position on a specific issue. We have also conducted forums to help educate our membership—our forums on Diversity are an example of this.

We invite you to identify community issues and possible ways that we might want to explore responding to specific issues.

What are new community issues or areas of interest that you would like to see explored by LWV-RoMaFH?

- 1.
- 2.
- 3.
- 4.
- 5.

For each new issue, area of interest or idea that is listed above, please list one or more of the following ways to explore or address a specific issue:

1. Educational program at unit meeting
2. Project to assist community
3. Public forum
4. Traditional LWV study
5. Host/convene a visioning process
6. Debate
7. Other (please specify)

NATIONAL ISSUES:

We will have materials at the meeting to allow us to review national positions. You can review them prior to the meeting at www.lwv.org.

LOCAL POSITIONS AT A GLANCE

(Approved 05/05)



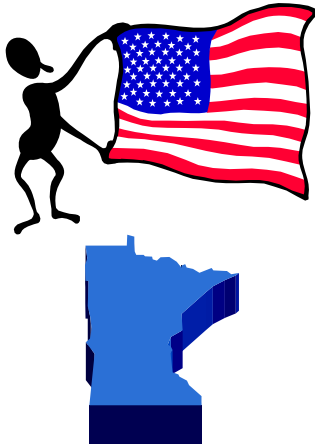
The LWVEF unveiled “Safeguarding the U.S. Democracy: Promoting an Independent Judiciary by Defending the U.S. Constitution,” a three-year public education program to increase understanding of our Constitutional system of checks and balances, the separation of powers and the importance of a strong third branch of government.



... RoMaFH League member studying ...

If you agree with the current LWV-RoMaFH position, check “OK” on the form. If you would like to raise issues or concerns about the position at the Lively Issues meeting, check “Discuss.”

GOVERNMENT	OK	Discuss
1. Support opportunities for citizen participation in city government and open appointment for advisory committees. (1988)		
2. Support City Manager form of government for Maplewood and Roseville (Plan B). Evaluate provisions of any proposed Roseville Charter in relation to Plan B. (1986, 1987, 2002)		
SOCIAL POLICY		
1. Support emergency medical services in Roseville with user fees. (1978, 1981, 2003)		
2. Support volunteer fire fighters with attractive wages and benefits, but not cross training as paramedics; oppose fees for fire department services. (2003)		
3. Support transportation options that serve the needs of the area. (1983)		
4. Support safe non-motorized pathways with costs assessed area-wide. (1983)		
5. Support equal opportunity for all students in public schools with use of unbiased textbooks and computer materials free of stereotypes. (1984, '85, '86, '87, '88, 2000)		
6. Support electing School Board members-at-large for District 621, 622, 623. (1985, updated 1988)		



. . . national, state and local issues in the Program Planning Guide! You should too!!!!



Treasurer's Report for December 2005

NATURAL RESOURCES

1. Support organized refuse collection, curbside collection of recyclables (1985)		
2. Support individual composting and government support for community composting (1982)		

LOCAL STUDY ITEMS

GOVERNMENT

A. Review Roseville city ordinances; housing and maintenance enforcement procedures; and compare with cities in our area. (2000, 2001)- Study in process

SOCIAL POLICY

B. Review educational materials in public schools for additional possible biases: ex: ethnic, cultural, (approved at annual meeting-2004) - Proposed

Previous Checking Balance, October 24, 2005	<u>\$2,495.50</u>
Income:	
Trash and Treasure Sale	\$10.00
Dues, 1 @ \$40	\$40.00
Refund, Joan Stark/unused postage	\$ 2.59
Total Income:	<u>\$52.59</u>
Expenses:	
#4048 LWVUS 2 nd Qtr PMP	\$536.45
#4049 USPS stamps, treasurer	\$7.40
#4050 Joan Stark, postage/finance update letters	\$27.00
#4051 Diane Nystrom, Voter printing and postage	\$72.36
#4052 Shirley Bradway, mailing labels, Voter	\$28.57
Total Expenses:	<u>\$671.78</u>
Balance on November 30, 2005	<u>\$1,866.31</u>
Fund Balances:	
Checking	\$1,866.31
Savings	\$3,808.77
Education Fund	\$3,131.12
Paid Members: 91 [3 families of 2, 84 individuals, 1 student]	



DC Greetings from Bob Waterman

Dear League RoMaFH:

November 21, 2005

By the time Ann Berry reads this to you at our next unit meeting, I will have made my way to Washington, D.C. I may be standing next to "Honest Abe" at the Lincoln Memorial or some other monument. Thanks to all of you for your well-wishes by phone, e-mail and cards. I am often asked why I am a member of the League of WOMEN Voters. My response is always the same: "If you knew these women--you would not be asking that. If you knew these women--you would be asking "how do I join?" I marvel at my remarkable good fortune to have spent time in my life with you. I have come to believe you are women of extraordinary grace. I am planning on staying active in League so I hope to see many of you at the National Convention and from time to time as I return to visit. In the end, I am feeling conflicted. Excited about the opportunities and adventures ahead, yet filled with regret at the great folks left behind. Thanks to all for the Barnes and Noble gift. I will be reading on the Metro Rail line as I ride to work! Stop in if you are in D.C.!!

Fondly,
Bob Waterman

League of Women Voters of Roseville,
Maplewood and Falcon Heights
Diane Nystrom
VOTER Mailing Coordinator
996 Glen Paul Court
Shoreview, MN 55126