



LEAGUE OF WOMEN VOTERS - RoMaFH
ROSEVILLE, MAPLEWOOD, FALCON HEIGHTS
Also serving the communities of Little Canada and Lauderdale

VOTER

February 2006

www.romafh.org

In this issue...

- 1 Feb. Unit Meetings
- 2 Co-Presidents' Letter
- 3 Calendar of Events / New Process Complicates Voter Registration
- 4-5 Announcements / Blessing or Curse?
- 6 Members Who Are Not Feeling Their Best / RoMaFH Book Sale Coming!
- 7 LWV Nat'l News/ LWVMN Immigration Position
- 8 Incomplete Immigration Report / LOTT
- 9 George Isaacs – Light-Rail Advocate
- 10 Treasurer's Report / Lively Issues
- 11 Correction for Leola Rempel
- 12 Thanks to RoMaFH

February Unit Meetings

THE NEW MINNESOTANS **A Discussion about Immigrants and Refugees, Economics and Education**

In April 2004, the League of Women Voters along with Neighborhood House partnered with Twin Cities Public Television to produce a town hall forum following the seven hour series *The New Americans*. [Joan Regal](#), a RoMaFH member and part of the committee that produced *The New Minnesotans* Toolkit, will lead us through a discussion based on an edited version of the video produced from the town hall forum. We expect a lively discussion about the issues – and look forward to your ideas on how best to use the Toolkit in our communities.

Tuesday, February 21, 2006

Timber Lodge Steakhouse

5:30 pm Social Hour/7:00 pm Discussion

Call Mary Jo Rourke 651.483.1228 for reservations

Tuesday, February 22, 2006

Prince of Peace Lutheran Church

9:30 am Discussion

2005 – 2006 Board of Directors

Teri Kysylyczyn
Barbara Lehn
Co-Presidents

Andrea Brodtmann
Marilyn Ulrich
Secretary

Florence Sprague
Treasurer

Ann Berry, Georgeann Hall, Diane Nystrom, Eileen Ulrich, Barbara Yates, Merrie Zakaras, Beverly Price, Lorraine Fischer CMAL
Program Division

Ann Cleland
Public Relations

Angela Robinson
Action Chair

Karen Hanson (Roseville)
Lorraine Fischer (Maplewood),
Barbara Lehn (Little Canada)
Jill Lund (623 School Board)
Observer Program

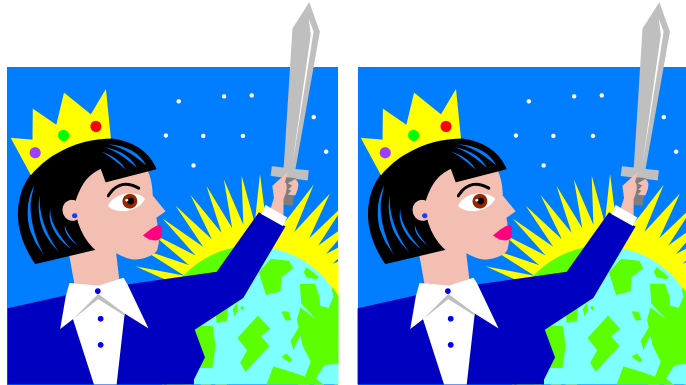
Andrea Brodtmann
Patricia DeFrancis
Sandi Lutz, Linda McLoon
Voter Service

Ann Berry
Carole Erickson
Membership

Georgiana Sobola
Units/ Admin. Asst

Laura French, Tammy Pust
Diane Nystrom
Newsletter

Vicky Lorenz
Joan Stark
Finance Committee



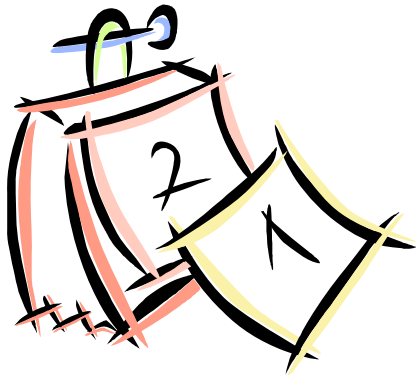
Co-Presidents' Letter

A new year signals membership renewal time! Even though we have a very successful League chapter, it is important to strengthen our chapter by bringing in new members. In that spirit, I would like to thank all of the League members who volunteered to staff a table at Roseville High School for Women in Sports National Day. It was great to see League members talking with young women about all our chapter has to offer. These volunteers were very well organized, especially given that we were asked to participate on short notice. It truly shows the dedication of our leaguers.

Some of you may have recently read one of the many newspaper articles concerning campaigning issues in Maplewood, one of the cities our League chapter represents. I mention this because our chapter specifically has been mentioned as part of the discussion. At issue is this city's prohibition of campaigning in any form on city property.

Some have applied a rather expanded definition of the word "campaigning." Are League candidate forums held at City Hall "campaigning"? Are off-duty firefighters who stuff envelopes while watching a football game at a fire station "campaigning"? Are two city employees, eating during an unpaid lunch period in the employee cafeteria and talking about the upcoming presidential election, "campaigning"? Are two citizens "campaigning" when they work out in the exercise room at the community center while discussing the upcoming senate election? Is a councilmember riding a fire truck during a parade "campaigning"?

The far-reaching implications of this no-campaigning policy make this an issue that we definitely want to watch. How does this effect freedom of speech? Does this erode our right as voters to gather information on candidates in order to make an informed decision at the ballot box? At what point is our democracy harmed?



Calendar of Events 2005-2006

- Feb. 21 Unit Meeting
- Feb. 22 Unit Meeting/
Board Meeting/Voter
Deadline
- Mar. 7 Precinct Caucuses
- Mar. 18 CMAL Quarterly
Meeting
- Mar. 21 Evening Unit Meeting
- Mar. 22 Daytime Unit Meeting
- Mar. 29 Board Meeting/Voter
deadline
- Apr. 18 Evening Unit Meeting
- Apr. 19 Daytime Unit Meeting
- Apr. 23 Book Sale (tentative)
- Apr. 26 Board Meeting/ Voter
Deadline
- Apr. 30 RoMaFH Booksale
- May ? Annual Meeting
- May 16 Evening Unit Meeting
- May 17 Daytime Unit Meeting
- May 24 Joint Board Meeting
- June 9-13 LWVUS Convention
in Minneapolis
- June 26 Rosefest
- June 28 Board Calendar
Planning Meeting

While the broader policy discussions will continue for some time, we cannot delay speaking on those issues which affect the core values of our organization. I encourage all League members to contact the elected officials of the cities that you live in. If you're a resident of Maplewood, please remind your elected officials of the importance of allowing candidate forums at city hall and allowing the placement of campaign literature outside the council chambers during the event. If you live in another city that RoMaFH represents, urge your elected officials not to follow Maplewood's lead. Wherever you live, please thank your officials for their past and future support.



New Process Complicates Voter Registration

For a year and a half, the League of Women Voters has registered new citizens before the monthly, large naturalization ceremonies begin. This process has worked out extremely well, with 820 out of nearly 1300 registering at the last ceremony on November 15, 2005.

Apparently the new District Director and the judge in charge of the ceremonies do not operate under the "if it's not broke, don't fix it" theory. They have instituted a new process. At the February 15th ceremony, the League will be allowed to distribute voter registration cards from the aisles after the ceremony concludes and to register voters at a table outside the hall when the new citizens are departing. The change came about because: (1) some complained about the immigrants completing the cards before they were actually citizens (even though we haven't collected them until after the ceremony when they are citizens); and (2) some believed that the immigrants look at the form as "yet another immigration form" to fill out. The new process will be evaluated to determine whether it adversely affects the numbers of citizens who register.

If you can, please join other Leaguers **at the Minneapolis Convention Center, Wednesday, February 15th, at 10:30 am**, to participate in this important work. Mayor Chris Coleman will be the featured speaker at the event. Please let Judy Stuthman know whether you can help by contacting her at 651/644-8588.



Announcements

- 📣 The state LWV Action Committee has compiled a list of resolutions for use at Precinct Caucuses on March 7th. Look for them at www.lwvmn.org or contact Ady Wickstrom (651) 224-5445 or awickstrom@lwvmn.org.
- 📣 The Diversity and Outreach Committee will meet at 10:00 a.m. on Sat., Feb. 18, 2006 at the Smooth Grind Coffee shop at Lexington and Woodhill to begin planning our next project. New participants are always welcome.
- 📣 We will be registering 1300 new citizens following the naturalization ceremony on Wed., Feb. 15th at the Convention Center in Minneapolis, 11 AM. RoMaFH members and friends could meet at the library in Roseville at 10 AM and carpool. Please let Judy Stuthman (644-8588) know if you can help!



Windows and Mirrors for All By Florence Sprague

Blessing or Curse?

I've been told that "May you live in interesting times" is a Chinese curse. Looking around me these days, I think I see why this is called a curse and not a proverb. All around the world countries, ethnic and racial groups, and religious groups are being asked to account for actions taken by the group in earlier times. Earlier by a few years, a few decades, or more than a century. Some weeks it seems that the news from around the world brings multiple examples from every continent. The history of humankind is not one of kindness, and facing up to the past is not easy.

China wants acknowledgement and apology from Japan for cruel actions in the years just before and during the Second World War; Korean women who were forced to be sex slaves for Japanese soldiers want reparation; Blacks in South Africa want the crimes of apartheid to be named in the Truth and Reconciliation process; Tutsis want the Hutus to atone for genocide in Rwanda; Native Americans want acknowledgment and reparation for the loss of land and culture to European immigration and the U.S. government; Jews are seeking acknowledgement from Germans for the Holocaust; the Armenians want the Turks to acknowledge genocide after WW I; African Americans want recognition of the wrongs of slavery, they never saw the 40 acres and a mule they were promised, let alone the freedom to vote and eat and live and get an education on an equal footing; Japanese Americans are still seeking recognition of the injustice of internment during WWII; Palestinians want their land back from Israel; to name a few. I'm sure you can think of others which have particularly caught your attention.



(cont.)

📣 **Thanks to Ann Cleland,** who has agreed to do Public Relations for us following the move of Bob Waterman.

📣 **The Code Enforcement Committee continues its work** monitoring the Roseville City Council's consideration of a rental property licensing ordinance and a property maintenance code. Questions: Contact Georgeann R Hall, the committee facilitator.

📣 **Please add to your Directory:**

Address for Bob Waterman: 1128 Evans Trail #103, Beltsville, MD 20705 Phone number unchanged.

Email for new member Wanda Davies: davies767@msn.com

Welcome our new (and former!) member:
Susan Hoyt
2217 Folwell Avenue
Falcon Heights, MN
55108
651/645-3849

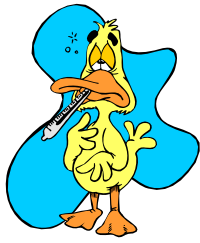
This is not a scholarly study. I have no references to give you and do not plan to detail any of the arguments for or against any of these situations. I am more interested in the phenomenon. I invite you to ponder some of the questions it raises. What is it about this time that allows or facilitates this? What response do we as citizens of the United States and the world want to see? (For example, the Senate was recently voting on an apology for not coming out against the lynching of African Americans in the first half of the 20th century. Some thought it went too far; others, not far enough.)

It is also interesting to think about the different types of recourse being sought: money, apology, return of land or other property, open acknowledgement. What accounts for these different goals? Culture? Timing? Perceived depth of pockets? Pragmatism?

Are you a member of a group seeking accountability? What type? Are you a member of a group from which accountability is being sought? What are you willing/able to give?

We should be proud to be a part of a society when it tries to face up to its mistakes. It is good to try to better our communities. We cannot undo history, so what should we do? Each of us can support our leaders when they address the wrongs of the past, and we can individually contribute to the soothing of wounded souls and the healing of our larger community. Many evils are committed or tolerated because people fear being shunned by their own group. Only when we care more about the feelings of the injured groups, or the groups to which we do not belong can healing occur and the chance of future injuries be diminished. We must continually be on guard for arbitrary and thoughtless insensitivity. It takes imagination to “walk a mile” in very different shoes, but it is not impossible. It takes care to make amends without creating new injury or perception thereof. It is time to stop making excuses, start making amends, and teach the next generation tolerance, fairness and flexibility. Teach them the strength to resist tantalizingly simple demagoguery in a complex world.

These are indeed interesting times. Seize the opportunity.



Members Who Are Not Feeling Their Best

Lila Recksiedler

3104 N. Victoria
Roseville, MN 55113-1936
651/484-7782

Michael Garelick

[Laura French's partner]
2720 Oxford St N
Roseville, MN 55113-2010
(651) 229-0961

Ida Davies

767 Heinel Drive
Roseville, MN 55113
651/484-6404

In this column, we are hoping to note the contact information for RoMaFH League members and their family members who are recovering from injury or illness and would likely appreciate a note or a quick phone call. Please contact either Tammy Pust (651/484-2573) or Laura French (651/229-0961) with any names you'd like included in this column in the future.

Thanks.



Hear Ye! Hear Ye! THE WONDERFUL ROMA FH BOOK SALE IS COMING!!!

Sunday April 30th from 7:00 am to 1:30 pm

We will need all kinds of books: hardcover, softcover, big books, little books, books for men, books for women, books for boys, and books for girls. We'll need magazines: craft, cooking, gardening, travel, and cross-cultural (i.e., *National Geographic*, etc.) We'll need CDs, DVDs, videos, cassettes, games, and puzzles of all kinds. The more the better!

Check all your bookshelves, your spouse's bookshelves, your kid's bookshelves, your friend's bookshelves, and bookshelves belonging to anyone else who might be ready to donate for a very worthy cause! While you're checking your shelves, check those bookcases out and decide whether we can use them to display the books at the sale. They really add dimension to the "set up"!

Then mark on your calendar the weekend of April 28-30 so that you can have a great time getting to know your fellow leaguers while we're working together:

- Fri. (4/28) 1 pm to 5 pm - transporting donations from Georgiana's home to Fairview Community Center, where we will sort them into the different categories.
- Sat. (4/29) 8 am to 2 pm - setting up the tables and bookcases, etc.
- Sun. (4/30) 7 am to 2 pm - selling and rearranging, and then packing up what we don't sell and returning them to Georgiana's.

Sign up sheets will be available at the unit meetings so you can let us know when you'll be able to help out. (Thanks to Julianne Johnson!) Please help us make this Book Sale the best one we've ever had!!!! Call Marty Everest (651-646-8026) or Joan Stark(651-488-4966) if you have any questions or ideas to share:



LWV National News

Law Day & “Safeguarding the U.S. Democracy”

May 1st is Law Day. Under the theme “Separate Branches, Balanced Powers,” the LWV is providing \$500 grants for Law Day programs that complement LWV’s efforts to promote an independent judiciary. Leagues are encouraged to partner with local bar association chapters and law schools. Application packets are available on-line. Proposals are due 2/24.

Sunshine Week 2006: Are We Safer in the Dark?

On March 13, 2006, join LWV for a 90-minute panel of distinguished speakers at the National Press Club in Washington, DC. This will be carried via satellite feed to participating libraries around the country. Details on-line at www.lwv.org.

Copies of *Local Voices* Report Still Available

Order Pub. #2076 for League events about homeland security, civil liberties and government transparency. Reports are free; shipping and handling will be charged.

League of Women Voters of Minnesota
IMMIGRATION POSITION, MAY, 2003:

Support incorporating immigrants into our communities by providing access to education, by endorsing the development of secure identification documents, and by respecting the right of law enforcement personnel to perform their duties without the burden of interpreting federal immigration policies. Oppose residents with legal immigrant status running for local office.

In the details, support of:

- State funding of Adult Basic Education for each program site should be adequate to meet the needs of the eligible residents;
- All Minnesota residents, regardless of their immigration status, should be eligible for in-state tuition at state colleges and universities under the same conditions, such as one year’s state residency or graduation from a Minnesota high school;
- The Department of Public Safety should recognize the *matricula consular* as an acceptable document to prove identity for obtaining a driver’s license;
- Law enforcement employees of state, county or local government agencies, such as the Department of Public Safety and state and local police, should not be deputized by the INS (now agencies of the Department of Homeland Security) to enforce immigration laws.

Opposition to:

- Residents with legal immigrant status should not be allowed to run for local offices.

If you would like to refresh your memory about the immigration issues in the LWVMN study, go to publications at www.lwvmn.org.

Leaders of Today and Tomorrow (LOTT)

The January LOTT conference was a terrific event attended by 50 bright young women anxious to make a difference in the world. The keynote speaker was Alisha Thomas-Morgan, who told the crowd how she was elected to the Georgia Legislature from a rich, white county, a remarkable feat given that she is young and black, and ran against two white men (and got 65% of the vote!!). It was quite clear why she won -- she is a very dynamic, smart, hard-working young lady. She was joined on the panel that followed by three other women with diverse backgrounds - Katie Boone, a past LOTT attendee who ran for Mankato City Council; Peggy Flanagan, a Native American Minneapolis School Board Member; and Linda Koblick, Hennepin County Commissioner and former Minnetonka City Council Member. Each inspired the audience.

LOTT members are eager to learn more about local Leagues. Feel free to attend future LOTT dinners where you'll meet some terrific young women who are going to be our future leaders. More information on-line at www.lwvmmn.org/LOTT.

INCOMPLETE STATE IMMIGRATION REPORT – MORE HARM THAN GOOD

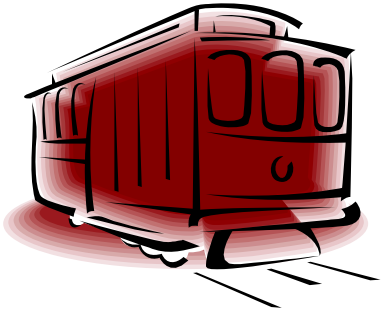
AN OPINION PIECE

By Judy Stuthman

In early December Governor Pawlenty's office released a publication titled *The Impact of Illegal Immigration on Minnesota; Costs and Population Trends*. Immediately, the reactions (mostly emails) started to come! I am on an email list for people and organizations working with immigrants and refugees. I think it is fair to say that this report caught many off guard. Everyone knows the U.S. immigration policy is broken and it needs to be fixed. This work must be done at the federal level because immigration is a matter dealt with by federal law so that it will be uniform across the country. A good, complete study could be very valuable and help provide insight as to what changes would be effective and fair, recognizing the contributions of temporary workers, but not result in policies based on emotions and prejudices of the day. After all, the first immigration law was the Chinese Exclusion Act of 1882. Surely we can do better.

Smart, effective policy change won't result from this state level report. The preface admits that it is just half a report, stating "*This report does not consider any of the benefits illegal immigrants provide in areas such as labor or tax revenue.*" Its authors chose to use an estimate of 80,000 to 85,000 illegal immigrants in Minnesota, an estimate nearly twice the size of the estimate published by the Minnesota Demography Department, the nonpartisan office that tracks such things. It also states that "*Minnesota's illegal immigrant population is greater than at least 20 other states.*" That means there are about 30 states that have more immigrants than Minnesota does and that, oh dear, we are below average!

The study mentions the high cost of educating K-12 children of illegals. Please note that many of these children may be American citizens by birth. In 1982, the U.S. Supreme Court in *Plyler v. Doe* ruled that the state of Texas could not bar undocumented children from receiving a public elementary and secondary education. This is the law of the land, and cannot be changed. We should not allow our Minnesota Legislature to waste time on it! The study also seems to muddy the issue when it slips from talking about the costs of educating illegals into "*Noncitizen Student Enrollment.*" Noncitizens does not mean



George Isaacs - Light-Rail Advocate

George Isaacs, husband of our long-time member Florence Isaacs, passed away on January 23, 2006. George was a streetcar historian, model railroader and tireless advocate for light-rail transit. An electrical engineer, George was best known for his community volunteerism. After he worked to stop the construction of a freeway on Hiawatha Avenue in Minneapolis in the 1960s, he pushed for a light-rail line to replace the freeway. George helped found the Minnesota Transportation Museum to preserve the history of the Twin City Lines streetcar system and spoke to hundreds of civic groups about the benefits of rail travel. 50 years after the streetcar lines closed, George and Florence proudly rode the Hiawatha Line on its opening day in June 2004.

George Isaacs is survived by his wife Florence, three children, five grandchildren and two great grandchildren. In his honor, his family accompanied his ashes via the light-rail line to his final resting place at Fort Snelling.

Our deepest sympathies to Florence and her family.

they are undocumented! This statistic would include legal immigrants and refugees. Remember, receiving an education allows for the possibility of obtaining a better paying job, which results in more tax revenue and an improved economy for our communities and state.

The Minnesota study further states *“In the area of public safety, many illegal immigrants are committing crimes: 1,571 criminal aliens were deported from the St. Paul Midwest Area of Operations in 2004, and over 500 remain in state prisons.”* We certainly don’t need more criminals; we have enough of our own. But you need to go to the back pages of the study to find in the footnotes that the St. Paul Midwest Area includes the states of North and South Dakota, Nebraska, Iowa and Minnesota, not just an area surrounding Ramsey County.

My point is this: the authors of this study chose to look only at the negative implications of immigration and then chose to write about them in such a way as to cause fear and alarm. Unfortunately there will be negative implications for all immigrants, not just the undocumented, as a result of this study. Why was this done? All of us probably have our guesses, but we need to hold our elected leaders to higher standards and visions. We need to solve the Minnesota problems of education, healthcare, environment, etc. Immigration is a federal program and needs attention at the federal level!

A few points to keep in mind:

- Most of the undocumented are from Mexico and Latin America.
- They come to work to help their families escape poverty. Most would prefer to stay home and work there if livable wage jobs were available.
- They come knowing they will be able to work. Some U.S. businesses go into Texas and Mexico to recruit these workers (“You get here and you’ll have a job.”)
- They are undocumented because the 5,000 visa slots for less skilled jobs are not enough to fill these jobs. They would prefer to be legal.
- They pay Social Security (and will never be able to collect because of their immigrant status) and income taxes unless they are paid “under the table” by their place of employment.
- From their low wage earnings, they pay rent, buy groceries, clothing, school supplies, etc., and from the

- remainder they send money home to their families.
- Most of these employees are not covered by medical insurance and many work in dangerous conditions.
- Fifty-five percent of undocumented immigrants have lived here for 10 years or more.

A copy of the full report is available on the homepage of the Minnesota Department of Administration website at www.admin.state.mn.us. Please read it and decide whether you agree that it does more harm than good.



Treasurer's Report for January 2006

Treasurer's Report

January 23, 2006

Previous Checking Balance, November 30, 2005 \$1,866.31

Income:

Total Income: \$0.00

Expenses:

#4053 Ann Berry

Sunshine \$20, Mbrsp \$3.32, Hol. dinner \$4.65 \$27.97

#4054 North Suburban Gavel Club dues \$15.00

Total Expenses: \$42.97

Balance on January 23, 2005 \$1,823.34

Fund Balances:

Checking \$1,823.34

Savings \$3,810.49

Education Fund \$3,131.12

Paid Members: 91 [3 families of 2, 84 individuals, 1 student]



Lively Issues!

At the January unit meetings, approximately 40 League members participated in the Lively Issues discussion, and it was, well lively! League members identified new or emerging issues and what actions we might take.

New/Emerging Local Issues

1. Eminent domain – education
2. Affordable housing – conduct a forum, possible study on open spaces vs. tax base; upgrading existing homes, etc.
3. Changing communities – many discussion items revolving around the increase in numbers of minority families: are student needs being met; does the broader community need further education; do we need needs assessments to determine



Our apologies to Leola Rempel for misstating her name in the January VOTER. Leola was co-chair of the natural Resources study committee in the late 1970s and early 1980s. This study resulted in our current positions, discussed last month at our Lively Issues meetings, on refuse collection, recycling, and support for community and private composting. This committee also instigated, organized and pulled off the first two hazardous waste collections in the Roseville area, impressing everyone involved including the Minnesota Pollution Control Agency. From Leola's committee's efforts, we all learned there was a lot of hazardous waste material out there and that people appreciated having a way of disposing of it safely. As a result of this work, we now have county-wide collection opportunities in our communities. Kudos to Leola Rempel!!

what assistance, support would be useful; do people need info on finding services, our communities, places of worship, schools, food shelves, how to vote, translations of important information, police dealings with language issues; how does LWV membership become more representative of the community; – have diversity committee review these issues and make recommendations.

4. Resolution of conflicts between developments and neighbors - research and present suggestions to improve the process.

A few issues were raised about current positions and possible actions.

Local Positions

1. Explore transportation options- article in the Voter regarding Active Living Project; review new studies on transportation; explore door to door transport (Woodbury), rent-a-car solutions, community car, and impact of oil costs to study or update current position.
2. Support city manager form of government – get more information on charter commission activity.
3. Community Center - maybe a community forum on the issue.
4. Revisit study on unbiased text books - should this issue be reviewed in context of current state of schools.

All of the local issues will be discussed at the May annual meeting.

National Policy Positions

Seven issues were identified to be directed to national for study or to be an emphasis for action under existing positions.

For Action:

Immigration: A study of immigration and the ramification of current policy and law, in order to raise the level of discourse leading to fair and effective change.

As an Emphasis for Action:

Under Election Process:

1. Apportionment: Act to enlarge LWV position on population-based apportionment to include an interval set by law with a nonpartisan method, and criteria that would provide a diverse representative group in each district in order to promote an open democratic process.
2. Campaign Finance: Pursue this issue to minimize the role of private money in funding elections and the resulting huge influence on Congress and the President.

Under Citizen Rights:

1. Individual Liberties: Act on this position in light of current



RoMaFH received a lovely thank you note from the Family Service Center for our League's holiday donation to their shelter. The money, toys and other donations we collected at our Holiday Party made a huge difference for many families in need. Thanks to all of you for your generous contributions.

- threats, including courts' role in wiretapping and government secrecy, and condoning of torture, along with the presidential usurpation of the roles of the other two branches of government.
2. Citizen's Right to Know: Pursue efforts to promote an open debate on public issues, free speech and press in an era of constraints on journalists and growth of big media conglomerates.

Under Environmental Protection:

1. Energy: Promote environmental protection by focusing on efforts that will dramatically decrease all emissions contributing to global warming.

Under Agricultural Policy:

1. Protect land and water resources, target research and technical assistance to developing environmentally sound agricultural policies (focus on impacts of corporate farms on secure handling of animal waste along with the land and water.

Please forward comments on the national positions to Board members prior to Feb. 22nd so the Board can approve them and forward them to the national office by March 1, 2006. National officials had also requested that local Leagues consider proposing a short-term fee increase for any studies or study updates. Members expressed the desire that the National League raise dues to cover the business of the organization and not do it on a per study basis.

Issues were also raised about how to focus our calls to action and what things we might want to lobby for at the national convention. We will discuss these items at our board meetings and annual meeting in May.

League of Women Voters of Roseville,
Maplewood and Falcon Heights
Diane Nystrom
VOTER Mailing Coordinator
996 Glen Paul Court
Shoreview, MN 55126