



LEAGUE OF WOMEN VOTERS - RoMaFH  
ROSEVILLE, MAPLEWOOD, FALCON HEIGHTS

*Also serving the communities of Little Canada and Lauderdale*

# VOTER

April 2006

[www.romafh.org](http://www.romafh.org)

## In this issue...

- Page 1 **April Units**
- Page 2 **Co-President's Letter**
- Page 3 **Calendar of Events; Gender Equality: A Work in Progress**
- Page 4 **Announcements  
2006 Finance Drive Update**
- Page 5 **Thanks to Members; Put on Your Marching Shoes; Annual Meeting Reminder**
- Page 6 **Treasurer's Report; CMAL Annual Convention & Brunch; Invitation From the Book Sale Fairies**
- Pages 7-8 **2005-2006 Proposed RoMaFH Board of Directors**

## April Unit Meetings

### **Examining the Role and Effectiveness of the Minnesota Pollution Control Authority**

You see or hear items on the news everyday: proposed mercury emissions limits, clean water issues, feed lots, storm-water control, air pollution in general. All of these issues fall under the authority of the Minnesota Pollution Control Agency (MPCA).

The League of Women Voters of Minnesota has studied this important organization. At our April Unit meetings, we'll get an introduction to the MPCA's function and see how well this state agency works.

Please bring newspaper clippings or notes of other media items about the MPCA's work to add to the discussion!

**Tuesday, April 18, 2006**

**Timber Lodge Steakhouse**

**5:30 pm Social Hour/7:00 pm Discussion**

Call Eileen Ulrich 651.488.4058 for reservations

**Wednesday, April 19, 2006**

**Prince of Peace Lutheran Church**

**9:30 am Discussion**

## 2005 – 2006 Board of Directors

Teri Kysylyczyn  
Barbara Lehn  
**Co-Presidents**

Andrea Brodtmann  
Marilyn Ulrich  
**Secretary**

Florence Sprague  
**Treasurer**

Ann Berry, Georgeann Hall, Diane  
Nystrom, Eileen Ulrich, Barbara  
Yates, Merrie Zakaras, Beverly  
Price, Lorraine Fischer CMAL  
**Program Division**

Ann Cleland  
**Public Relations**

Angela Robinson  
**Action Chair**

Karen Hanson (Roseville)  
Lorraine Fischer (Maplewood),  
Barbara Lehn (Little Canada)  
Jill Lund (623 School Board)  
**Observer Program**

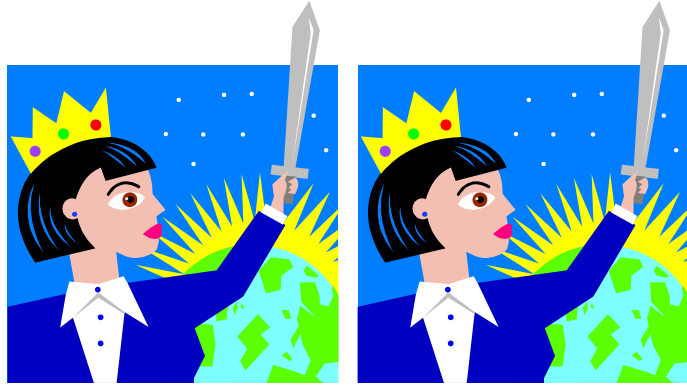
Andrea Brodtmann  
Patricia DeFrancis  
Sandi Lutz, Linda McLoon  
**Voter Service**

Ann Berry  
Carole Erickson  
**Membership**

Georgiana Sobola  
**Units/ Admin. Asst**

Laura French, Tammy Pust  
Diane Nystrom  
**Newsletter**

Vicky Lorenz  
Joan Stark  
**Finance Committee**



### Co-Presidents' Letter

We would like to thank those that participated in the Code Enforcement Study (and the ongoing study).

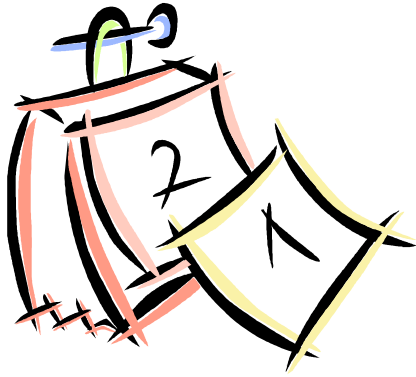
The March Unit Meetings on code enforcement drew an excellent turnout and lots of engaging questions. If you happen to see the speakers, please thank them for their talks. We all know how important it is to contact your city council people and city departments for concerns that you may have. Our guest speakers reminded us how lucky we are to have such approachable people in our communities.

The National Convention is fast approaching. If you have never been to a National Convention and would like to see the process firsthand, this would be a great opportunity to do so. The Convention will be in downtown Minneapolis on June 9-13, 2006.

The Convention agenda will be full of compelling discussions. For instance, the Illinois delegation plans to present a concurrence to abolish the death penalty. The delegation will hold discussions of their position on the Sunday before the vote.

There are lots of opportunities for you to volunteer at the Convention. Our RoMaFH League is handling registration, and we could still use you! Please contact Sandi Lutz, 651/433-2563 to sign up for a shift. Our League is also hosting an exhibit and sale of Hmong needlework. We are excited about this opportunity to celebrate the diversity of our community as well as introduce League members from across the nation to a unique and beautiful art form. If you can help staff the sale, please contact Judy Stuthman at 651/644-8588.

Our membership continues to increase. Welcome to our new additions. We hope to see you all at the Annual Meeting May 9<sup>th</sup>.



## Calendar of Events 2005-2006

- Apr. 18 Evening Unit Meeting
- Apr. 19 Daytime Unit Meeting
- Apr. 23 Book Sale (tentative)
- Apr. 26 Board Meeting/ Voter  
Deadline
- Apr. 30 RoMaFH Booksale
- May 9 Annual Meeting
- May 13 CMAL Annual  
Convention and Brunch
- May 16 Evening Unit Meeting
- May 17 Daytime Unit Meeting
- May 24 Joint Board Meeting
- June 9-13 LWVUS Convention  
in Minneapolis
- June 26 Rosefest
- June 28 Board Calendar  
Planning Meeting

## Windows and Mirrors for All By Florence Sprague

### Gender Equality: A Work in Progress

What goes around comes around. Sometimes that is good, sometimes it can be deeply disappointing. I'd wager that most reading this are old enough to remember the Women's Movement of the 1960s and 70s. We might not all see the debates, acts of rebellion, protests, or legislative and judicial battles of that era through the same lens, but the changes sought then, and sometimes achieved, are significant to us all.

Looking around me at school, in magazines, and television today I often wonder what happened to the change for which we worked so hard. Young girls today seem even more preoccupied with appearance, body image, make-up, clothing and "boys" than ever. Then I look at news coverage of girls sports' tournaments or read about a female CEO and know that yes, there has been a lot of change.

I was heartened to see a column in the college newspaper my son recently brought home written by a young woman in support of feminism. I was disheartened that she felt that despite the changes of the last 40 years, women are still judged by different rules than men. For example, she still perceives that people see an assertive man as a strong leader and an assertive woman as a pushy b\*\*\*\*.

It has been said that true equality is when a woman can be just as mediocre as a man who holds the same job. Mediocrity is nothing to which to aspire, but being held to the same standards is. However, being judged by the same standard has turned out to be trickier than it seems at first glance. In addition to the subconscious expectations attached to gender through which perceptions of behavior are filtered, as a society, we have not yet learned that different is not necessarily lesser. It is all too human to see one style as the norm and all others as deviant and lesser. It is human, but it is counterproductive. It does not reward each individual for using all of his or her talents and creativity, but looks for those who fit a mold which may be outdated. Consequently it does not optimally take advantage of the contributions of all.




## Announcements

 Welcome, New Members! Please add these names to your copy of the Membership Directory, and introduce yourself when you see these new members at meetings!

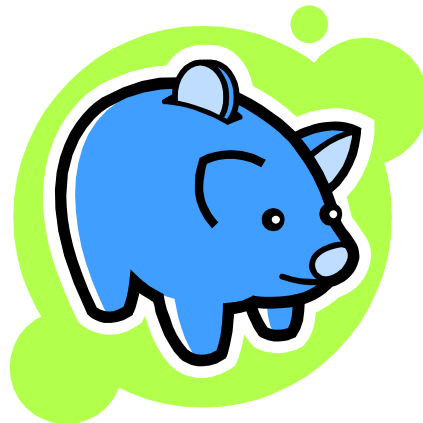
Susan Hoyt  
2217 Folwell Ave  
Falcon Heights, MN  
55108

Ann Haugan  
1161 Oakcrest  
Roseville, MN 55113

Janet Delmore  
526-5 Lovell  
Roseville, MN 55113

 The next meeting of the Diversity and Outreach Committee will be Saturday, April 22, 2006 at 10:00 a.m. at the Smooth Grind coffee shop at Lexington and Woodhill. New faces are always welcome. We will be working on plans for possible voter education and registration programs before the fall election.

Gender is the one classification which affects everyone, regardless of age or race or religion. It is often the first piece of information a new parent is told about a newborn and continues to be a classification which is hard to escape for the rest of life. The challenge of seeing each person as an individual of worth and unique style and abilities is not over. Not for you and me, not for our male friends, relatives and coworkers individually, not for businesses and civic organizations. We cannot rest upon the gains already made, or they may erode. We need to continue to refine the message and re-teach the lessons which affirm the positive acceptance of the individual, not the stereotype.



## 2006 Finance Drive Update

LWV members and friends are responding generously as we reach the mid-point of our 2006 Finance Drive. By the end of March, \$2,185.00 had been contributed.

To make a contribution, please enclose a form along with your check designating your gift to the Tax Deductible Education Fund or the Non-Deductible General Operating Expenses. Contributions may be made anytime up to and including the May 9 membership meeting. For additional information, please call Vicky Lorenz at 651 490 1608 or Joan Stark at 651 488-4966.



The beautiful flowers in memory of George came today. Thank you so much to League. George thought so highly of League and my membership in it. He would be pleased.

Florence H. Isaacs



### Put on Your Marching Shoes!

Join your RoMaFH friends at the Rosefest Parade on June 26<sup>th</sup> as we march (ok – we walk!) in the parade, distribute hundreds of flags to children along the parade route and help remind people how important it is to vote. Not to be outdone by other parade entries, we are accompanied in our walk by our very own talking chicken (usually Marty Everest, who does a great job “squawking” about the importance of voting!), and a very fancy convertible (thanks to Georgiana’s brother-in-law.)

The parade starts 6:30 pm on Monday, June 26<sup>th</sup>. We’re one of the first units in the parade, and it generally takes us an hour or so to walk the route. This year, the route starts at the Roseville Area High School parking lot, moves east on County Road B2, turns north on Lexington to Woodhill, then turns west on Woodhill and ends at the Oval parking lot.

If you, your family and friends are interested, we’d love to have you join us. Call Michael Garelick, 952/925-0000, to volunteer or just show up in your marching shoes!



**May 9, 2006**  
**Save this Date!**

For the 53<sup>rd</sup> RoMaFH  
Annual Meeting

Falcon Heights City Hall

Social hour 5:30 pm  
Dinner 6:00 pm



## Treasurer's Report for March 2006

March 25, 2006	
Previous Checking Balance, February 22, 2006	<u>\$2,298.82</u>
<b>Income:</b>	
Dues 1 @ \$50	\$50.00
In kind: Joan Stark, Finance Drive	\$52.33
Finance Drive	\$315.00
Total Income:	<u>\$417.33</u>
<b>Expenses:</b>	
#4060 Georgeann Hall, Flowers for Isaacs	\$41.73
#4061 Barb Lehn RoMaFH bookmarks	\$19.73
In kind, as above	\$52.33
#4062 LWVUS 3 <sup>rd</sup> qtr. PMP	\$536.45
#4063 Florence Sprague, Treasurer copies	\$10.00
Total Expenses:	<u>\$660.24</u>
Balance on March 25, 2005	<u>\$2,055.91</u>
Fund Balances:	
Checking	\$2,055.91
Savings	\$3,817.20
Education Fund	\$4,221.12
Paid Members: 92     3 families of 2, 85 individuals, 1 student	



## Invitation from the Book Sale Fairies

Join us on Saturday, April 29th, to join in the merriment of putting together the best book sale yet!! As we all work together as busy bees in the hive, munching on lunch and snacks prepared for you by the Book Sale Fairies, we can enjoy the sweetness of

## CMAL ANNUAL CONVENTION & BRUNCH

Saturday, May 13, 2006  
Jordan New Life Lutheran Church  
1922 25th Avenue North, Minneapolis

9:30 registration, 10:00 - 10:30 Brunch (cost \$15)  
10:30 - 11:30 Keynote Speaker  
11:20 - 12:30 Annual Meeting

Who is the newcomer in your Neighborhood? Did you know that:

- Minnesota's foreign-born population has more than doubled since 1990.
- Census figures show that in 2000, 5% of Minnesota's population was foreign-born, ranking us 25th among the states in that regard.
- Minnesota ranks first nationally in the share of foreign-born residents who are political refugees, largely Somalis, Bosnians or Hmong people.

getting to know each other better, as well as decorating the Fairview Community hallway, as it has never been decorated before!

Bring all your great ideas with you, and if you have any more bookcases or shelves, bookends, or tables, bring those too! If you have any more books, puzzles, CDs, DVDs, VHS tapes, cassettes, old records, or recorded books to donate, bring them.

**Our greatest need is for help on Sunday from noon until 2:00.** We have to be closed down, boxed up and out of the Fairview Community Center by 2:00 when the building closes. Then we need to get all "leftovers" back to Georgiana's house for storage. If you can help for any part of this work, we'd really appreciate it!

Please call Marty Everest (646-8026 until April 19<sup>th</sup>) or Joan Stark (488-4966) if you have questions or can help.

**The keynote speaker, Wanda Kirkpatrick**, Director of the Office of Diversity and Equal Opportunity (ODEO), Metropolitan Council, will show us, neighborhood by neighborhood in the metro area, that beyond percentages, "Demographics Are People." Where are they living? What are they doing? Why did they come? What changes/challenges are taking place in their lives and in the neighborhoods where they have settled? Can those changes be evaluated?

League meetings are free and open to the public.



## 2006-2007 Proposed LWV RoMaFH Board of Directors

### Officers

Co-Presidents

Teri Kysylyczyn

Barbara Yates

Secretary

Andrea Brodtman

Treasurer

Florence Sprague

### Directors

Program

Ann Berry

Georgeann Hall

Diane Nystrom

Eileen Ulrich

Carole Erickson

Lorraine Fischer

CMAL

Community Relations

Public Relations

Ann Cleland

Action

Angela Robinson

Observer Program

Dan Roe (Roseville)

Lorraine Fischer (Maplewood)

Barb Lehn (Little Canada)

Jill Lund (623 School Board)

Voter Service	Andrea Brodtman Pat DeFrancis Sandi Lutz Linda McLoon
Organization	
Membership	Karen Schaffer Gale Pederson
Administrative Assistant	Georgiana Sobola
VOTER Editor	Laura French
VOTER mailing	Diane Nystrom
Finance	Joan Stark Betty Harper
<b>Nominating Committee</b>	Lila Recksiedler Marti Everest Shirley Bradway Georgiana Sobola
<b>Off-Board Responsibilities</b>	
Records & Directory	John Kysylszyn
Book Sale	Joyce Blomquist Nancy Irsfeld
Annual Meeting	Carole Erickson Mary Ann Palmer

Submitted in accordance with Art. VIII, Sec. 2 of the RoMaFH Bylaws by the Nominating Committee: Carolyn Cushing; Mary Ann Palmer; Elizabeth Harper; Carole Erickson

League of Women Voters of Roseville,  
Maplewood and Falcon Heights  
Diane Nystrom  
VOTER Mailing Coordinator  
996 Glen Paul Court  
Shoreview, MN 55126