



LEAGUE OF WOMEN VOTERS - RoMaFH
ROSEVILLE, MAPLEWOOD, FALCON HEIGHTS
Also serving the communities of Little Canada and Lauderdale

September 2005

www.romafh.org

In this issue...

- Page 1 **9/20/05 Joint Unit Meeting Information**
- Page 2 **Co-President's Letter**
- Page 3 **Calendar of Events ROMAH Non-partisan policy**
- Page 4 - 5 **"Windows and Mirrors For All – Which People Do You Mean?", by Florence Sprague**
- Page 5 **Announcements**
- Page 6 **Trash and Treasure Sale Continues; and Members Who Are Not Feeling Their Best**
- Page 7 **Treasurer's Reports**
- Page 8 **LWVUS 2006 Convention Information**

PROMOTING POLITICAL RESPONSIBILITY THROUGH INFORMED AND ACTIVE PARTICIPATION OF CITIZENS IN GOVERNMENT

Joint Unit Meeting

"Conversations with Constituents"

Come meet and ask questions of your state legislators and county commissioners

Confirmed:
Rep. Nora Slawik
Rep. Mindy Greiling
Rep. Leon Lillie
Sen. Chuck Wiger
Sen. John Marty
Commissioner Jan Parker
Commissioner Victoria Reinhardt

September 20, 2005
7:00-9:00

City Offices, City of Falcon Heights
2077 Larpenteur Avenue West
Refreshments will be served.

2005 – 2006 Board of Directors

Teri Kysylyczyn
Barbara Lehn
Co-Presidents

Andrea Brodtmann
Marilyn Ulrich
Secretary

Florence Sprague
Treasurer

Ann Berry, Georgeann Hall, Diane Nystrom, Eileen Ulrich, Barbara Yates, Merrie Zakaras, Beverly Price, Lorraine Fischer CMAL
Program Division

Robert Waterman
Public Relations

Angela Robinson
Action Chair

Karen Hanson (Roseville)
Lorraine Fischer (Maplewood),
Barbara Lehn (Little Canada)
Jill Lund (623 School Board)
Observer Program

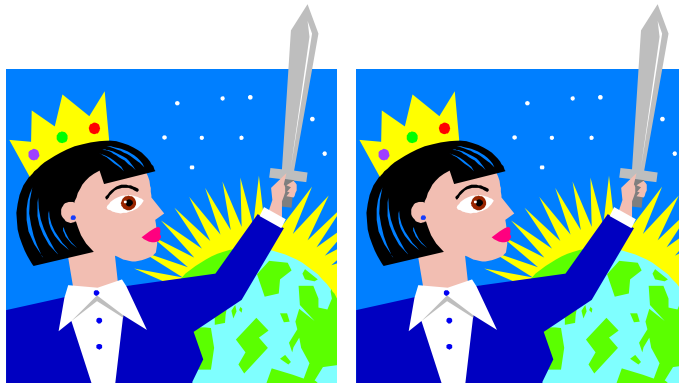
Andrea Brodtmann
Patricia DeFrancis
Sandi Lutz, Linda McLoon
Voter Service

Ann Berry
Carole Erickson
Membership

Georgiana Sobola
Units/ Admin. Asst

Laura French, Tammy Pust
Diane Nystrom
Newsletter

Vicky Lorenz
Joan Stark
Finance Committee



September 2005 Co-Presidents' Letter

Welcome back to a new League year. The new board has met during the summer to plan the calendar of events for the new league cycle and the various committees are already deep in preparation. In the near future we can look forward to candidate forums and our V.I.P. general membership meeting. And it only gets better from there.

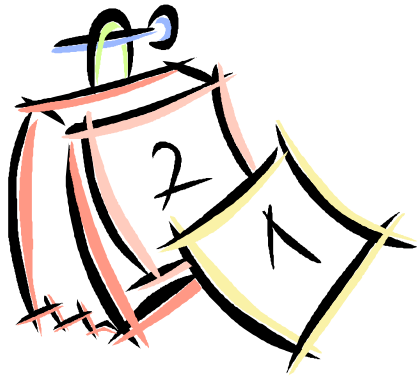
POWER of 3
Campaign

A quick word to every member: Power of 3 Campaign. Your LWV RoMaFH board voted to donate \$500.00 from the education fund to this great cause. We are looking for RoMaFH members to work to help match or exceed our \$500.00 donation so that we can be a part of realizing the many improvements that need to be made in the Women's' Building, where the state league office is located and to supplement the state education fund. Here's how to donate: Write a check to LWVMNEF and your name will be included as a contributor. We will be asking for your contributions at the V.I.P. meeting this month.

Call Teri Kysylyczyn, 651-484-1384 or Barbara Lehn, 651-468-7297 for details.

We know that this will be an action-packed year for our league. Join us in our fall kick-off.

Barb Lehn and Teri Kysylyczyn
Co-Presidents



Calendar of Events 2005-2006

- Aug. 24 Board meeting/Voter
Deadline
- Sept. 13 Primary Election
- Sept. 20 General meeting
- Sept. 23 Mini Trash to
Treasure Sale
- Sept. 28 Board meeting/Voter
deadline
- Oct. 3-15 Candidate
Forums
- Oct. 15 CMAL Quarterly
Meeting
- Oct. 18 Evening Unit Meeting
- Oct. 19 Daytime Unit Meeting
- Oct. 26 Board Meeting/Voter
deadline
- Nov. 8 Election Day
- Nov. 16 General meeting
Diversity (Little
Canada)
- Nov. 30 Board meeting/Voter
deadline
- Dec. 7 Holiday party
- Dec. 28 Voter deadline
- Jan. 17 Evening Unit Meeting/
Lively Issues
- Jan. 18 Daytime Unit Meeting/
Lively Issues



ROMAFH Non-Partisan Policy

Adopted September 26, 2001

Reviewed August 25, 2004 (To be reviewed annually)

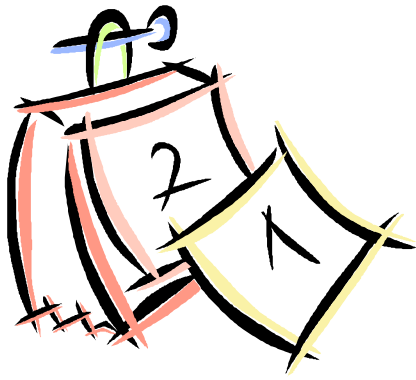
The League of Women Voters is a non-partisan organization. The League encourages members to be informed participants in political activity, but the organization does not support or oppose any political party or candidate. League members never mention their League connection when they are expressing a view that disagrees with a League position.

Candidates for partisan office do not serve on the board. Any current board member may accept a Board appointment as long as it is unlikely to be any conflict of interest in that office.

Members in the most visible leadership positions do not engage in any obvious partisan or non-partisan political activity in order to avoid any question of League impartiality and objectivity. Therefore, it is expected the **President, Voter Service and Finance Drive chairs** will not hold elective office or high-level party office (district level or higher) during their board service, endorse a candidate, appear in campaign literature, or advertise their support for party or candidate in any public way.

Board members in the less-visible positions:

- May continue to be active citizens;
- May run for and hold non-partisan elective office;
- May serve in local appointed position (e.g. Planning Commission, Human Rights Commission);
- May circulate nominating petitions (although NOT at League meetings);
- May serve behind the scenes in campaigns;
- May donate money to campaigns;
- May raise money for candidates ;
- May attend events to hear candidates' positions on issues or announce their candidacy.



- Jan. 25 Board Meeting/Voter deadline
- Feb. 21 Unit Meeting
- Feb. 22 Board Meeting/Voter deadline
- Mar. 18 CMAL Quarterly Meeting
- Mar. 21 Evening Unit Meeting
- Mar. 22 Daytime Unit Meeting
- Mar. 29 Board Meeting/Voter deadline

- Apr. 16 Easter
- Apr. 18 Evening Unit Meeting
- Apr. 19 Daytime Unit Meeting
- Apr. 23 Book Sale (tentative)
- Apr. 26 Board Meeting/ Voter deadline

- May ? Annual Meeting
- May 16 Evening Unit Meeting
- May 17 Daytime Unit Meeting
- May 24 Joint Board Meeting
- June 9-13 LWVUS Convention in Minneapolis
- June 26 Rosefest
- June 28 Board Calendar Planning Meeting

ROMAFH Non-Partisan Policy [Continued]

All Board members attempt to keep their League activities separated in the mind of the public from partisan activities. Individuals with well-known political affiliations do not moderate candidates' meetings or screen questions. If Board members are uncertain about a proposed activity, they should consult the President and the Board.

When there is a question about the appropriateness of an action, the Board may consider:

- Will this action impair the League's reputation for fairness and objectivity?
- How significant is the activity/incident/publicity to the average citizen of our community?
- Is the public able to differentiate between an active board member and any long-time League member?
- Would the resignation of the board member correct the public view of the League?

Windows and Mirrors for All ~ ~

Which People do you Mean?

By Florence Sprague

Words. I love words. I take great pleasure in learning new words, discovering the connections between words, reading an author's skillful use of words. I like to compare how different languages express similar concepts. Words can be so beautiful and fascinating. Words can also do so much harm.

Take the simple word people. That refers to everybody, right? All beings of the species *homo sapiens*. In theory. In practice it often divides.



Announcements

📣 **The Minnesota League of Women Voters has temporarily relocated its offices** to 413 Wacouta, St. Paul, MN 55101. Their phone number remains the same 651.224.5445.

📣 **Nominations for LWVUS Board and Nominating Committee are Due October 1st**
For the nomination form, contact the national board at www.lwvus.org or the state board at lwvmn.org.

📣 **The Friends of Roseville's Harriet Alexander Nature Center (FORHANC) are hosting the Second Annual Wild Rice Festival on September 10th** as a fundraiser for the Nature Center, 2520 N. Dale St.

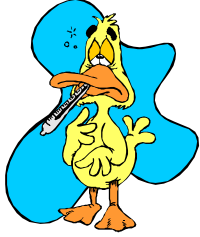
📣 **Roseville Citizens League is hosting a candidate forum on Sept. 8th at the Oval.** The forum will be broadcast on cable and replayed regularly.

“Have your people talk to my people.” has become a joke about a certain style of doing business, and the pronouns are specific to the context. Elsewhere they are not always clear. Your people, my people, our people, those people, some people, people like that. Which people are the right people? Which people are the in people? There are multiple magazines all about people, but they aren't people like me.

I recently saw a film based on unusually candid conversations about race in America among a racially mixed group of people. At one point a white woman who was married to a Latino man was asked to recount a time when she realized that she had been racist. She told of a time when she had been upset by an article describing Latino men in a derogatory way. Horrified, she had said to her husband “Honey, did you know that people think of you this way?” His silence made her realize that yes, he knew this sad fact, and she had compounded it by implying that Latino men were not part of an unqualified “people.”

This mistake is probably one I make, perhaps even in these articles which I write for a very specific audience. Does people mean only people like oneself? How should one distinguish among groups of people. When is it appropriate to distinguish among groups and when is it offensive? When must we strive to be as inclusive as possible, and when are the distinctions crucial? Does the answer depend on the subgroup of the writer or speaker? It is both more complicated and more simple than we might think. It depends on thoughtfulness and intentionality, awareness and consideration.

Every language creates words for different groups of people around the globe derived from different types of categorization, nationality, ethnicity, religion, race. A person might be German, English, Argentinean, Chinese, Egyptian, Caucasian, Buddhist, Hindu, etc. Some have been around since language began, and some are more modern constructs. The word used in English is sometimes derived from what a group calls itself, sometimes not. The indigenous people in South Africa call themselves Bantu. This word just means “people” in their group of languages. So if one says the Bantu people it is redundant, trying to distinguish the indigenous people from the colonial people. The people called Navaho in English call themselves Dineh (one of several spellings in English and not recognized by Microsoft Word), or “the people.” I believe that this is true in other languages/ethnic groups as well. When language develops when a group is relatively isolated, why would you need another name for yourself? So, what do they call other humans, now that



Members Who Are Not Feeling Their Best

Mary Ann Palmer

2479 Brenner St.
Roseville, MN 55113-1002
651/633-8140

Lila Recksiedler

3104 N. Victoria
Roseville, MN 55113-1936
651/484-7782

In this column, we are hoping to note the contact information for ROMAFH League members who are recovering from injury or illness and would likely appreciate a note or a quick phone call. Please contact either Tammy Pust (651/484-2573) or Laura French (651/229-0961) with any names you'd like included in this column in the future.

Thanks.

all the peoples of the earth are interconnected for better and worse?

Where is this going? Just to encourage all to pause and consider word choice periodically. When you use the word people in English, and as an American (another word surrounded by conflict), and as a white what/who do you mean? Are you trying to be inclusive or exclusive? Is your true intent coming through? It is natural to begin one's linguistic categories from oneself outward into the world. Just take care that the categories you make make sense. Too often they automatic and thoughtless. And be aware of when you are making categories, unlike the embarrassed wife above. Most of us take our identification with "people" so for granted that we can do harm and blur our thinking with the careless use of one unwitting word. People.



TRASH AND TREASURE SALE CONTINUES

Friday, September 23

Mother Nature dumped a torrent of rain on our June 11th Trash and Treasure Sale, (but we managed to make \$429.31 anyway!) Our gallant volunteers managed to rescue a boatload of treasure which are now residing in Georgiana Sobola's basement. A number of new treasures have joined them and members can bring others on board.

To help these treasures find new homes we will be holding a mini Trash and Treasure Sale on Friday, September 23 at 1961 Hamline Ave. N. in Roseville. We will need volunteers for Thursday, Sept. 22 and Friday, Sept. 23. If you couldn't volunteer in June, here's your chance:

Thursday, Sept. 22, 12:30 p.m. Setting up for the sale.
Approximately two hours.

Friday, Sept. 23. Sale day.
First shift 8:00 a.m. to 12:00 noon
Second shift: 12:00 to 4:30 plus a little time for cleaning up.

Call Geogiana Sobola at 651/644-3337 to volunteer. Sign up also at the general meeting on Sept. 20th.



Treasurer's Reports for June 22 and August 23, 2005

June 22, 2005

Previous Checking Balance, May 23, 2005 \$2,837.85

Income:

Dues 3 @\$50, 1 Fam. @\$75, 1 @\$40 \$265.00
 Finance Drive \$25.00
 Total Income: \$290.00

Expenses:

#4032 Ann Berry, Convention expenses, membership \$351.48
 #4121LWVMN, buttons \$34.67
 #4122 Barnes & Noble, recognition for CC \$52.65
 #4033 Donna Peterson, Secretary expenses \$15.47
 #4034 Barb Lehn Convention expenses, Rose awards \$208.97
 #4035 Barb Lehn Board folders \$18.66
 #4036 Red Lake Community Fund \$25.00
 Total Expenses: \$706.90

Balance in Checking June 22, 2005 \$2,420.95

Fund Balances:

Checking \$2,420.95
 Savings \$3,800.00
 Education Fund \$3,788.87

Paid Members: 75 3 families of 2, 69 individual

August 23, 2005

Previous Checking Balance, June 22, 2005 \$2,420.95

Income:

Dues 4@ \$50, 1@ \$40 \$240.00
 Trash and Treasure Sale \$429.31
 Total Income: \$669.31

Expenses:

#4037 LWV Chisago County Area,
 Kelly Thompson Memorial \$25.00
 #4038 Sandi Lutz, convention expenses \$258.24
 #4039 LWVUS, 1st Qtr. PMP (FY2005-06) \$536.45
 #4040 Florence Sprague, Diversity panel exp.
 (To be reimb. EF) \$150.34
 #4041 CMAL dues/PMP \$91.00
 Total Expenses: \$1,061.03

Balance in August 23, 2005 \$2,029.23

Fund Balances:

Checking \$2,029.23
 Savings \$3,803.38
 Education Fund \$3,788.87

Paid Members: 79 3 families of 2, 73 individual

ROMAFH REGISTERS!

Our own Past President, Sandi Lutz, is chair of the Registration Committee for the LWVUS Convention. Every member of the ROMAFH League will be needed to ensure that registration does not look like this ---



--- but instead looks like this ---



We'll do our part to ensure that the Convention goes smoothly! Stay tuned for more details.

Mark your Calendars Now for the LWVUS Convention

**June 9-13, 2006
Minneapolis Hilton**

The Convention promises to provide:

- **Scintillating planning meetings**
- **Sweet opportunities**
- **Simmering fellowship**
- **Swelling enthusiasm for LWV**

Blend yourself into the energetic dynamics vibrating from the Local Arrangements Committee for the League of Women Voters of the United States 47th National Convention to be held at the Minneapolis Hilton from June 9-13, 2006. You will want to be an insider for this rare gathering on our turf. And your local League will definitely want to budget to send its full delegation.

The LWVUS Convention determines the officers, budget, and new studies for the succeeding two years. It reconfirms or amends LWVUS positions and it helps the national board prioritize items for action. There will be nationally known speakers and panels on issues of League interest.

Garrison Keillor to Speak

The convention banquet speaker will be Minnesota's own Garrison Keillor. The ware's market is a smart spot to buy and sell League-related products. A special event local fundraiser will be a fun add-on for families and friends to get a glimpse of LWV.

Some committees mainly involve advance planning; others require many daily volunteers during the Convention. It is possible to play a role and still be a delegate. On the other hand, volunteering is a perfect way to experience a LWV Convention without the cost of the registration fee, travel and time commitment. You can augment your local League's presence and knowledge of issues and the LWV, encourage new members, prospects and family, and have a great time promoting our state and organization. **Contact Carol Frisch and Alice Moormann, Co-chairs, Local Arrangements Committee, LWVUS Convention 2006, for more info.**