



**LEAGUE OF WOMEN VOTERS - RoMaFH**  
**ROSEVILLE, MAPLEWOOD, FALCON HEIGHTS**

*Also serving the communities of Little Canada and Lauderdale*

October 2005

[www.romafh.org](http://www.romafh.org)

**In this issue...**

- Page 1 **10/18-19/05 Unit Meeting Information**
- Page 2 **Co-President's Letter**
- Page 3-4 **Calendar of Events Windows and Mirrors for All – "The Imprint of Experience"**
- Page 5 **Trash and Treasures - All Gone!!; More Power to Us With the Power of 3 Campaign Announcements**
- Page 6 **Members Who Are Not Feeling Their Best**
- Page 7 **Treasurer's Report**
- Page 8 **Bucks 4 Books Campaign; Court News**
- Page 9 **LWVMN Website/ Email Update**
- Page 10 **VOTER tear off form**

*Promoting political responsibility through informed and active participation of citizens in government.*

**October Unit Meetings**

**"What Do You Get For Your 65¢"**

With only five employees, and a budget that is miniscule compared to most city and county agencies, the Ramsey Conservation District provides us with an amazing range of services. They are truly the "unsung heroes" of local conservation, and the first line of defense against environmental degradation. All this at only about 65¢ per resident in taxes!

Come meet Dorothy Waltz, one of the five elected Supervisors who govern the Ramsey Conservation District, (and a ROMAFH League member!) who will describe how the District carries out its mission.

**October 18, 2005**

**5:30 p.m. Dinner; 7:00 p.m. Presentation**  
**Timber Lodge Steakhouse**  
**1655 W. County Road B2**

**Reservations: Call Bob Waterman**  
**651/917-1019**

**October 19, 2005**

**9:30 a.m. - Prince of Peace Lutheran Church**  
**County Road C and Victoria**  
**Bring your own beverage.**

## 2005 – 2006 Board of Directors

Teri Kysylyczyn  
Barbara Lehn  
**Co-Presidents**

Andrea Brodtmann  
Marilyn Ulrich  
**Secretary**

Florence Sprague  
**Treasurer**

Ann Berry, Georgeann Hall, Diane Nystrom, Eileen Ulrich, Barbara Yates, Merrie Zakaras, Beverly Price, Lorraine Fischer CMAL  
**Program Division**

Robert Waterman  
**Public Relations**

Angela Robinson  
**Action Chair**

Karen Hanson (Roseville)  
Lorraine Fischer (Maplewood),  
Barbara Lehn (Little Canada)  
Jill Lund (623 School Board)  
**Observer Program**

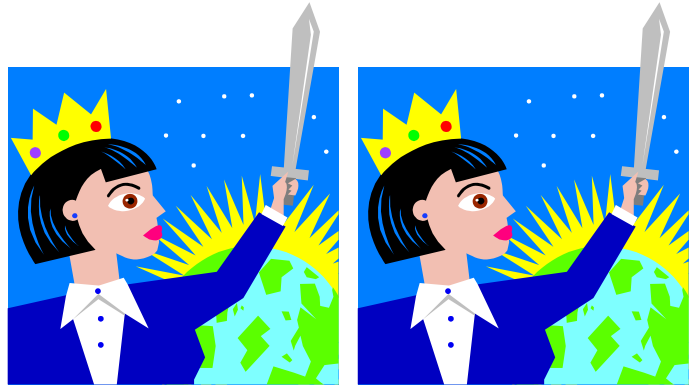
Andrea Brodtmann  
Patricia DeFrancis  
Sandi Lutz, Linda McLoon  
**Voter Service**

Ann Berry  
Carole Erickson  
**Membership**

Georgiana Sobola  
**Units/ Admin. Asst**

Laura French, Tammy Pust  
Diane Nystrom  
**Newsletter**

Vicky Lorenz  
Joan Stark  
**Finance Committee**



### October 2005 Co-Presidents' Letter

We would first of all like to thank everyone who has contributed to the Power of 3 Campaign. Also, many thanks to those who organized the September 20<sup>th</sup> *Conversations with Constituents* meeting. It was a huge success.

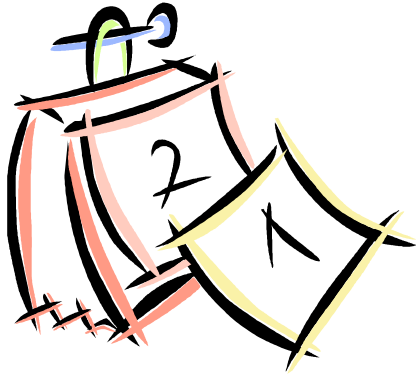
We have a busy fall coming up. We hope to see all of you at the following events:

- October unit meetings with Dorothy Waltz from the Water and Soil Conservation District (Look for more information in this issue of the VOTER.)
- Local city candidate forums (Roseville – 10/12; Maplewood – 10/13; and Falcon Heights – 10/19).
- November diversity meeting (Look for more information in next month's issue of the VOTER.)
- December Holiday party

We would like to remind everyone that the calendar can be found on our website at [www.romafh.org](http://www.romafh.org) and will be updated as frequently as possible.

On page 10 of this issue of the VOTER you will find a tear-off form for you to use to tell us whether you want to receive the VOTER by mail or e-mail. Please fill it out and submit it to the names provided so we can better serve you.

Teri Kysylyczyn  
Barb Lehn  
Co-Presidents



## Calendar of Events 2005-2006

- Oct. 12 Roseville City Council  
Candidate Forum  
(Roseville City Hall)
- Oct. 13 Maplewood City  
Council Candidate  
Forum (Maplewood  
City Hall)
- Oct. 15 CMAL Quarterly  
Meeting
- Oct. 18 Evening Unit Meeting
- Oct. 19 Daytime Unit Meeting
- Oct. 19 Falcon Heights City  
Council Candidate  
Forum (FH City Hall)
- Oct. 26 Board Meeting/Voter  
deadline
- Nov. 8 Election Day
- Nov. 16 General meeting  
Diversity (Little  
Canada)
- Nov. 30 Board meeting/Voter  
deadline
- Dec. 7 Holiday party
- Dec. 28 Voter deadline
- Jan. 17 Evening Unit Meeting/  
Lively Issues
- Jan. 18 Daytime Unit Meeting/  
Lively Issues

Windows and Mirrors for All ~ ~

## The Imprint of Experience

By Florence Sprague

Somewhere in The Hitchhiker's Guide to the Galaxy, by Douglas Adams, an unpleasant experience is described as being like drinking a glass of water. When the listener claims that that doesn't sound so bad he is told to imagine that he is the glass of water. Oh.

The former Ramsey County Jail is only one story tall at the entrance on Kellogg Boulevard; seen from the Mississippi River it has many stories.

Children often see rules, chores and curfews as onerous infringements on their independence; adults see them as setting appropriate limits and teaching responsibility.

The familiar maxim "History is written by the winners" is needed to explain bias in the selection of information presented to subsequent generations.

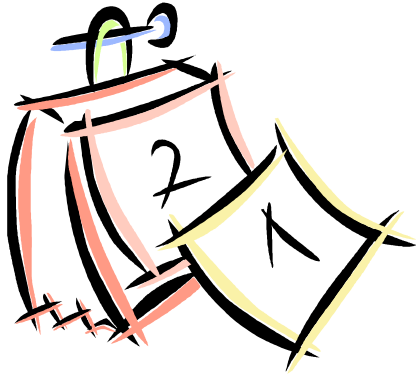
Two photographs of one scene taken from different angles can give entirely different impressions and even show different objects.

These seemingly disjointed snippets are connected by a conundrum--how to get an accurate report of an event or description of a place.

I found an answer recently in my fortune cookie: Truth is Often a Matter of Perspective.

**"It really became clear to me that there is a huge divide between the experience white people have living in this country and what African-Americans have." Playwright Thomas Gibbons**

The Twin Cities offer a rich banquet of theatrical offerings on which few of us have time or funds to more than nibble. This does not, however, keep me from clipping out reviews of promising events which I then fail to look at again until the play has long since closed. One such play was "Permanent Collection" by Thomas Gibbons, staged by the Mixed Blood



- Jan. 25 Board Meeting/Voter  
deadline
- Feb. 21 Unit Meeting
- Feb. 22 Board Meeting/Voter  
deadline
- Mar. 18 CMAL Quarterly  
Meeting
- Mar. 21 Evening Unit Meeting
- Mar. 22 Daytime Unit Meeting
- Mar. 29 Board Meeting/Voter  
deadline
- Apr. 16 Easter
- Apr. 18 Evening Unit Meeting
- Apr. 19 Daytime Unit Meeting
- Apr. 23 Book Sale (tentative)
- Apr. 26 Board Meeting/ Voter  
deadline
- May ? Annual Meeting
- May 16 Evening Unit Meeting
- May 17 Daytime Unit Meeting
- May 24 Joint Board Meeting
- June 9-13 LWVUS Convention  
in Minneapolis
- June 26 Rosefest
- June 28 Board Calendar  
Planning Meeting

Theatre last fall.

This is Gibbons' second play with a theme of racially determined experience and reaction to situations and the resultant ambiguity of right and wrong. In the review cum interview in the *Star Tribune* (October 31, 2004) Gibbons spoke of his own interactions with actors, directors, reviewers and audience members when dealing with works touching issues involving race in America. Too often the parties divided on racial lines and the resultant difference in individual "imprint of experience", and exposed underlying assumptions of the writer and one another.

It became even trickier when a member of a racial minority objected to one of his plays because he, a white playwright, attempted to write about African-American issues. Taken to its logical extreme, such possessiveness of stories serves only to divide us further, and as Gibbons said "Doesn't it mean the only story we can tell is our own personal story?" Gibbons takes on complex issues and wants to retain their complexity in his plays, which necessitates looking at both sides. Done respectfully, dealing with stories affected by divergent racial experiences can help to bring us together. But we must be aware of the limitations of our understanding.

For you and me, this complexity is partly in learning that we do not know how it feels to be the glass of water, and we shouldn't assume that we do. We may see a one story building while others inhabit the next five floors. We simply may not have seen the person hidden by the chair in that photo. As part of a community we benefit from knowing about others' stories and how our stories fit together, as different faces of a die.

And with this we must seek to understand our own story. In what cultural myths were our childhoods steeped? What assumptions underlie our own beliefs and actions? Are they positive or negative? That is, do our assumptions empower us, or not? How have our experiences imprinted themselves upon us, thereby shaping our interpretation of the world? Then we are more ready to expose ourselves to the different experiences of others as told by themselves.



## Announcements

📣 **Understanding the Patriot Act**, a discussion sponsored by the Roseville Human Rights Commission, Oct. 11<sup>th</sup>, 7:00-8:30, at the Roseville Skating Center. Participating: Mike Hatch, MN Attorney General; Rev. Grant Abbott, Greater St. Paul Area Council of Churches; Mary Jane Morrison, Hamline University; Chuck Samuelson, MN-ACLU; Mike Ward, U.S. Dept. of Justice Terrorism Coordinator.

📣 **Roseville Central Park Foundation Octoberfest**  
Oct. 21, 6:00 (social hour); 7:00 (dinner) Roseville Skating Center

📣 **Northwest Youth & Family Services Autumn Gala**, Oct. 29<sup>th</sup> Midland Hills Country Club (651/379-3458 for tickets)



## TRASH AND TREASURES – ALL GONE!

Even though it took two days, June 11<sup>th</sup> and September 23<sup>rd</sup>, our Trash and Treasure sale brought in a respectable \$700+. We thank all those who were willing to part with their treasures, with special thanks to those who volunteered their time and talents to help with pricing, setting up and working on the sale days.

Ann Berry, Kathy Ciernia, Eileen Ulrich and Marty Everest were brave enough to volunteer on both days. Helping out in June were Carole Erickson, Laura French, Carolyn Cushing, Judy Stuthman, Mary Jo Rourke, Pat DeFrancis and Betty Harper. In September Diane Nystrom, Joan Stark, Nancy Irsfeld, Donna Peters and Jill Lund helped out.

Thanks also to those who furnished card tables, large folding tables and book cases. The basement at 1961 Hamline Avenue has lost all traces of this project except for a number of plastic tablecloths and other covers which were rushed into service when the deluge came on June 11<sup>th</sup>.

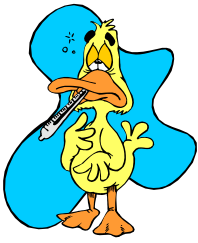
Our biggest thanks to Georgiana Sobola, who put the entire project together and graciously made a home for our Treasures until they could find new homes.

## More power to us with the



**Item:** At a meeting of the LWVMN Board in the Minnesota Women's Building last winter those of us sitting at one end of the table were cold enough that we put our coats over our shoulders; those sitting at the other end were so warm they were removing their blazers.

**Item:** On several occasions when I was editor of the *Minnesota*



## Members Who Are Not Feeling Their Best

### Mary Ann Palmer

2479 Brenner St.

Roseville, MN 55113-1002

651/633-8140

### Lila Recksiedler

3104 N. Victoria

Roseville, MN 55113-1936

651/484-7782

In this column, we are hoping to note the contact information for ROMAFH League members and their family members who are recovering from injury or illness and would likely appreciate a note or a quick phone call. Please contact either Tammy Pust (651/484-2573) or Laura French (651/229-0961) with any names you'd like included in this column in the future.

Thanks.

*Voter* we had to delay publication until we could pay the bill for the previous issue.

**Item:** Garrison Keillor will speak at the LWVUS convention in Minneapolis next June. His agreeing to do so is a direct result of half-time work by our communications director, Juanita Peterson. Juanita is a volunteer. We cannot and should not count on getting such essential and professional services volunteered to our organization year after year.

I don't like it when "my" women's organization owns and works in a building that needs not only an efficient and effective heating and air conditioning system, but also new roof insulation, up-to-date wiring for technology, a security system that involves more than a locked door and a buzzer, and more.

Nor do I like it when cash flow problems mean that the staff has to expend time and energy deciding which bills must be paid and which will have to wait, and when we can't pay vendors on time and consequently feel like deadbeats.

I don't like it when we are unable to hire a communications director or an outreach person, both positions essential for the future health of LWVMN. I don't want us to burn out the outstanding volunteers we have. Not to mention our staff.

**Enter: *POWER of 3 Campaign.*** You will have heard of this three-year campaign to raise 3.9 million dollars to be shared among three entities: the Minnesota Women's Consortium, the Minnesota Women's Building, and the LWVMN Education Fund. By July of this year the campaign had come close enough to its goal to qualify for a major Kresge Foundation challenge grant.

But for the portion of funds that will support the work of LWVMNEF, we still need \$550,000. Reaching our goal will mean that we will not only be able to renovate the Minnesota Women's Building, of which we are part owner, but also that we will be able to hire urgently needed staff, and establish a working capital fund to smooth out the income stream.

As campaign committee member Carol Frisch said recently, "No gift is too small." To which Executive Director Sally Sawyer and President Helen Palmer replied in unison, "And no gift is too big."



## Treasurer's Report for September 2005

### September 28, 2005

Previous Checking Balance, August 23, 2005 \$2,029.23

#### Income:

Dues 4@ \$50, 1@ \$40	\$415.00
Trash and Treasure Sale	\$20.00
LWVMNEF reimbursements	\$226.50
Voter \$76.16, March Diversity meeting	\$150.34
Total Income:	<u>\$661.50</u>

#### Expenses:

#4042 Teri Kysylyczyn convention expenses	\$258.24
#4043 Ann Berry Membership postage/copies	\$38.00
#4123 Kenneth Anderson Website domain name	\$27.90
#4044 Diane Nystrom Voter postage and printing	\$72.36
Total Expenses:	<u>\$396.50</u>

Balance in September 28, 2005 \$2,294.23

#### Fund Balances:

Checking	\$2,294.23
Savings	\$3,805.27
Education Fund	\$3,562.37

Paid Members: 90     3 families of 2, 83 individual, 1 student

---

**An Opportunity to  
Help School Children  
Displaced by  
Hurricanes Katrina  
and Rita – brought to  
you by the League of  
Women Voters of  
Louisiana Education  
Fund**

---

League of Women Voters of La. Education Fund

728 North Blvd.

Baton Rouge, La. 70802

(225) 927-2255 (Office)

President-LWVLA@Cox.net (Email)



### Dear Friends,

Never in the history of our great country have our school children been displaced to all of the 48 contiguous states to get away from Katrina/Rita's tsunami destruction of New Orleans and across the Gulf Coast from Alabama to Texas. School Districts across the country have graciously opened their doors to help our children.

The League of Women Voters of Louisiana Education Fund (LWVLAEF) is kicking off a national effort, the "**Bucks 4 Books**" campaign to raise money to purchase textbooks, educational materials and educational equipment for the school districts, which have absorbed the school children from Alabama, Mississippi, Louisiana and Texas, who have been displaced due to Hurricanes Katrina/Rita for the 2005-2006 school year. The LWVLA Education Fund is a non-partisan, all volunteer team of community leaders and citizens,



## Court News

John G. Roberts, Jr. was sworn in as the 17<sup>th</sup> Chief Justice of the United States Supreme Court on September 29, 2005. Chief Justice Roberts was first nominated by President Bush to fill the vacancy created when Justice Sandra Day O'Connor announced her retirement from the nation's highest court, but was then quickly nominated to replace Chief Justice Rehnquist upon his recent death. President Bush recently nominated his White House Counsel, Harriet Miers, to replace retiring Justice O'Connor.

Kathleen Blatz, the first woman to serve as chief justice of Minnesota's Supreme Court, announced last week that she will step down from the Court in January. Blatz was appointed to the Minnesota Supreme Court by then Gov Arne Carlson in 1996 and was appointed Chief Justice in 1998. She was the youngest justice to serve on the court. Blatz plans to return to private life.

IRS certified 501(c)3 organization.

The LWVLA Education Fund has committed to dedicate **One Hundred Percent (100%)** of the "**Bucks 4 Books**" funds raised in accordance with the guidelines outlined in this letter. The funds raised for this project may be used for students displaced from their assigned school district in their community by Katrina/Rita to another school district within the state or in any other state of the United States of America. **No administrative fees will be charged against the donations received for this project.** Help our children make it through this school year wherever they are.

We are asking the League of Women Voters, Parent Teacher Organizations and any other willing organizations and individuals across the nation to join us in helping to raise the funds for these uprooted young people. They may be homeless from Katrina/Rita, but they still need proper educational materials so they can become responsible future citizens of the USA.

Help us to identify those school districts that have been so generous and encourage them to apply for a "**Bucks 4 Books**" grant, which will be awarded based upon the number of Katrina/Rita displaced students within their school district. All donated funds collected under the "**Bucks 4 Books**" campaign for textbooks, educational materials, and educational equipment are for the students who have been displaced due to Hurricane Katrina/Rita for the 2005-2006 school year. Let's help our children **now** through tax-exempt donations rather than wait for the school districts come to us with elections for increased taxes.

Years ago, the children in Baton Rouge wanted an elephant, so they collected "Pennies for Penny." The children were successful and Baton Rouge got its very own elephant, Penny. If children can set goals and win, I know that we can be successful in our goals too. Supporting our children educationally ~no matter where they may be~ is some of the most important work we may ever do, so let's all get out and collect "**Bucks 4 Books.**"

Please make your checks payable to:

**League of Women Voters of Louisiana Educational Fund**  
**Memo: "Bucks for Books" Campaign**  
**P. O. Box 4451, Baton Rouge, LA, 70802-4451**

The "Bucks for Books" campaign will end on June 30, 2006. Grants requested and postmarked by the official closing date, June 30, 2006, which meet the program criteria, will be processed to the fullest extent of the funds donated to the "**Bucks 4 Books**" campaign.

Any residual funds not appropriated after all grants have been reviewed and/or processed under these guidelines will be used for other LWVLAEF educational projects.



To keep expenses down, all solicitations from the LWV of Louisiana Education Fund will be made through electronic communications. Please send this letter to all of your friends, family and business associates. Thank you for your enthusiastic and generous support of our children and always.

**First Call to Convention  
2006**

From Kay Maxwell, LWVUS  
President

**47<sup>th</sup> LWVUS National  
Convention**

June 10-13, 2006

Hilton Minneapolis

**Schedule:**

Fri., 6/9 Pre-Convention  
Training 2-5 pm

Sat. 6/10 Briefings 10 am –  
noon; Call to Order 1 pm;

Tues., 6/13 Adjourn noon

**Important Dates to  
Remember:**

Deadline for submitting  
program proposals: 3/1/06

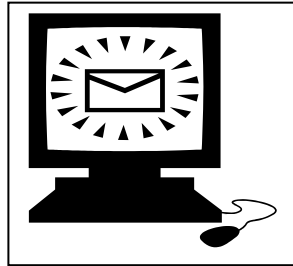
Deadline for submitting bylaw  
amendment proposals:  
3/1/2006

**More Information:**

[www.lwvus.org](http://www.lwvus.org)

Share the Spirit of League,  
Jean Armstrong, President LWVLAEF

---



**LWVMN Website /  
Email Update**

By Ady Wickstrom  
LWVMN Webmaster  
LWV Arden Hills/Shoreview)

If you haven't already noticed, the login to the Member Resources section of our website at [www.lwvmn.org](http://www.lwvmn.org) has changed. We are now using individual passwords instead of using the shared username and password in the past. The first time you log in, click on "Forgot Password" and your initial password will be emailed to you. If we do not have your email address, you will be asked for more information to allow us to set you up. This change will make things much simpler and will allow for future improvements to our website.

The first improvement made possible by this change was the change to the Email Lists page. We can now tell which lists our members are subscribed to. If you are not in a list, there will be a "join" button. If you are in a list, there will be a "drop" button (do not click it if you want to stay on the list). Joining lists is much easier – you no longer have to enter your name, email address and League name. Just click a button!

More improvements will be coming in the future. If you want to be notified of the changes, please join lwvmn-share from the Email Lists page.

Another recent change was to the use of lwvmn-share. It will now be used for announcements and notifications from the office – Capitol Letter, Action Alerts, website changes, etc. Your League is welcome to send notices of your local meetings and events. If you find an interesting article that you'd like to pass on to other League members or if you would like to discuss an issue, please send it to the new discuss email list.

As always, please send your comments and suggestions to Ady Wickstrom at [awickstrom@lwvmn.org](mailto:awickstrom@lwvmn.org), or call her at home at (651) 780-5245 (6:00 a.m. to 10:00 p.m. any day of the week) or the office (651) 224-5445.

Name: \_\_\_\_\_

Address: \_\_\_\_\_

Email address: \_\_\_\_\_

I want to receive the VOTER by  mail --  email

Unit Choice:  Tuesday dinner or  Wednesday morning

For the past year, we have made the VOTER available electronically by putting a copy of it up on the ROMAFH website: [www.romafh.org](http://www.romafh.org). Members who have signed up to receive the VOTER electronically get an email from the Action Chair indicating when the VOTER has been posted on the site, and then are free to read it on-line or print off their own copy from the website. Members who prefer to receive the VOTER by mail still receive a paper copy sent to their home address.

Because we have received a few complaints that some members who expect a paper copy have not been receiving it, this month we are sending the VOTER to all members by U.S. Postal Service and again asking members to tell us which way they'd prefer to get their VOTER.

**Please complete the attached form asap and return it by:**  
**Mail** to Diane Nystrom, 996 Glen Paul Court, Shoreview, MN 55126, or  
**Email** the information to [tpust@jessonpustlaw.com](mailto:tpust@jessonpustlaw.com) (Tammy Pust).

League of Women Voters of  
 Roseville, Maplewood and  
 Falcon Heights  
 The VOTER October 2005  
 Diane Nystrom, Voter Mailings  
 996 Glen Paul Court  
 Shoreview, MN, 55126

